

SY750H

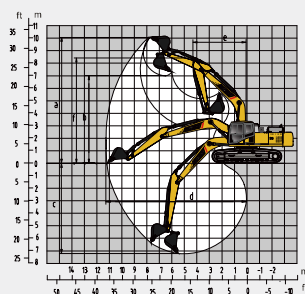
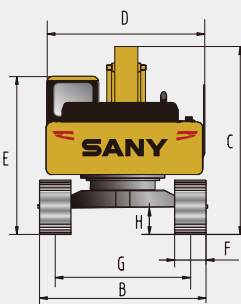
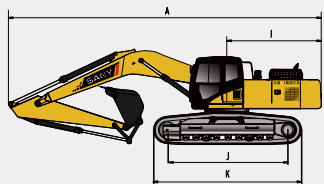


Quality Changes the World

SY750H

Rated Power: 391kW/1800rpm
Overall Weight: 78500kg
Standard Bucket Capacity: 5.0m³

Specification	SY750H	Machine dimensions (mm)	SY750H	Operating range (mm)	SY750H
Overall Weight	78500kg	A. Total length (during transportation)	12879	a. Maximum excavation height	11020
Bucket Capacity	5.0m ³	B. Total width (extended/retracted)	4030/3430	b. Maximum dumping height	7170
Engine	Cummins X15	C. Total height (during transportation)	4981	c. Maximum excavation depth	7580
Type	Direct injection, 6-cylinder 4-stroke, turbocharged intercooling, water cooling	D. Upper width	4479	d. Maximum excavation radius	12100
Rated Power	391kW/1800rpm	E. Total height (top of cab)	3795	e. Maximum turning radius	5390
Maximum torque	2373Nm/1400rpm	F. Standard track shoe width	650	f. Maximum height at minimum turning radius	9815
Displacement	14.9L	G. Track gauge (extended/retracted)	3380/2780		
Traveling speed (high/low)	4.5/2.9(km/h)	H. Minimum ground clearance	892		
Rotation speed	7.2rpm	I. Tail turning radius	4175		
Gradeability	70%(35°)	J. Track ground contact length	4770		
Ground pressure	114kpa	K. Track length	5986		
Bucket digging force	410kN				
Bucket arm digging force	354kN				
Walking traction force during movement	547kN				



Open-Pit Coal Mining Collecting Vanguard



Comprehensive upgrade for greater value



New Power



New Technology



New Model



More Energy-efficient



More environmentally friendly



More reliable



Official WeChat account of Sany Heavy Machinery

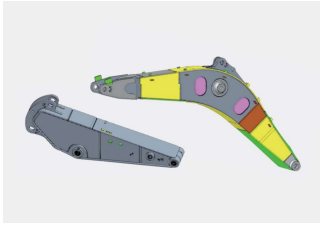


Official Douyin account of Sany Heavy Machinery

Sany Heavy Machinery Co., Ltd. Address: Sany Industrial Park, Dongcheng Avenue, Economic and Technological Development Zone, Kunshan, Jiangsu Postcode: 215300
After-sales service hotline: 4008-28-2318; Consultation and complaint hotline: 4008-87-9318;
Website: <http://www.sanygroup.com>

This manual intends to be as comprehensive and detailed as possible on the basis of the existing information. Considering the continuous technological advancements and updates of Sany Heavy Machinery Co., Ltd., the technical parameters, configurations and other information of the product may be modified and adjusted at any time. Therefore, this product manual is for reference only, and the appearance, configuration, technical parameters, etc. of specific models are subject to the actual models sold by the dealer.

Published in December 2022



Reinforced work device components

Comprehensive application of 20,000-hour work device technology, utilizing high-strength steel + high-strength forgings + wear-resistant steel plates, casting integrated linkage, three-section box body structure, widened cross-section, and enlarged box body cross section, resulting in a 20% increase in bending resistance cross-section coefficient, high reliability, and long lifespan.

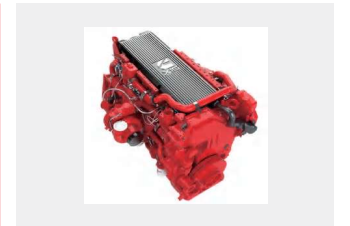


Air conditioning upgrade

All-new air conditioning duct, optimized exhaust outlet position, 10% improvement in cooling effect compared to previous generation models, 30% increase in condenser volume compared to previous generation models, vehicle-mounted air conditioning system with easy cleaning and maintenance.

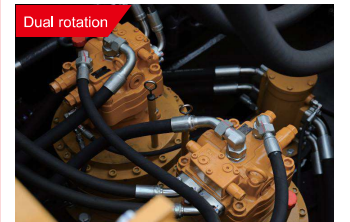
Power System

Equipped with Cummins X15 engine of 391kw power, achieving powerful power output, low fuel consumption, high torque, high durability, fast dynamic response, and improved work efficiency.



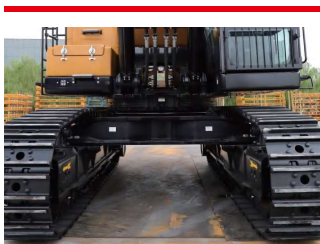
Hydraulic system

Equipped with Kawasaki fully electronic control main valve and main pump, and a dual rotating system of higher rotary torque for smoother rotation; high-volume main pump with heavy-duty P-Q power control, balancing fuel consumption while improving excavation efficiency with strong excavation endurance; integrated electromagnetic proportional valve characterized by efficient flow distribution and smooth composite actions.



Shovel bucket upgrade

Standard 5.0m³ large bucket is suitable for harsh and severe mining environments, configurable with 4 series of buckets, meeting "one condition, one bucket" requirement, improving construction efficiency, easily handling various complex conditions, and enhancing product value and customer profitability.



Reinforced lower frame

Utilizing imported KYB travel motors to provide strong driving torque; enhanced dual-strand wear-resistant tracks, heavy-duty supporting wheels, and adjustable track assembly for ensuring lower frame strength in harsh environments.