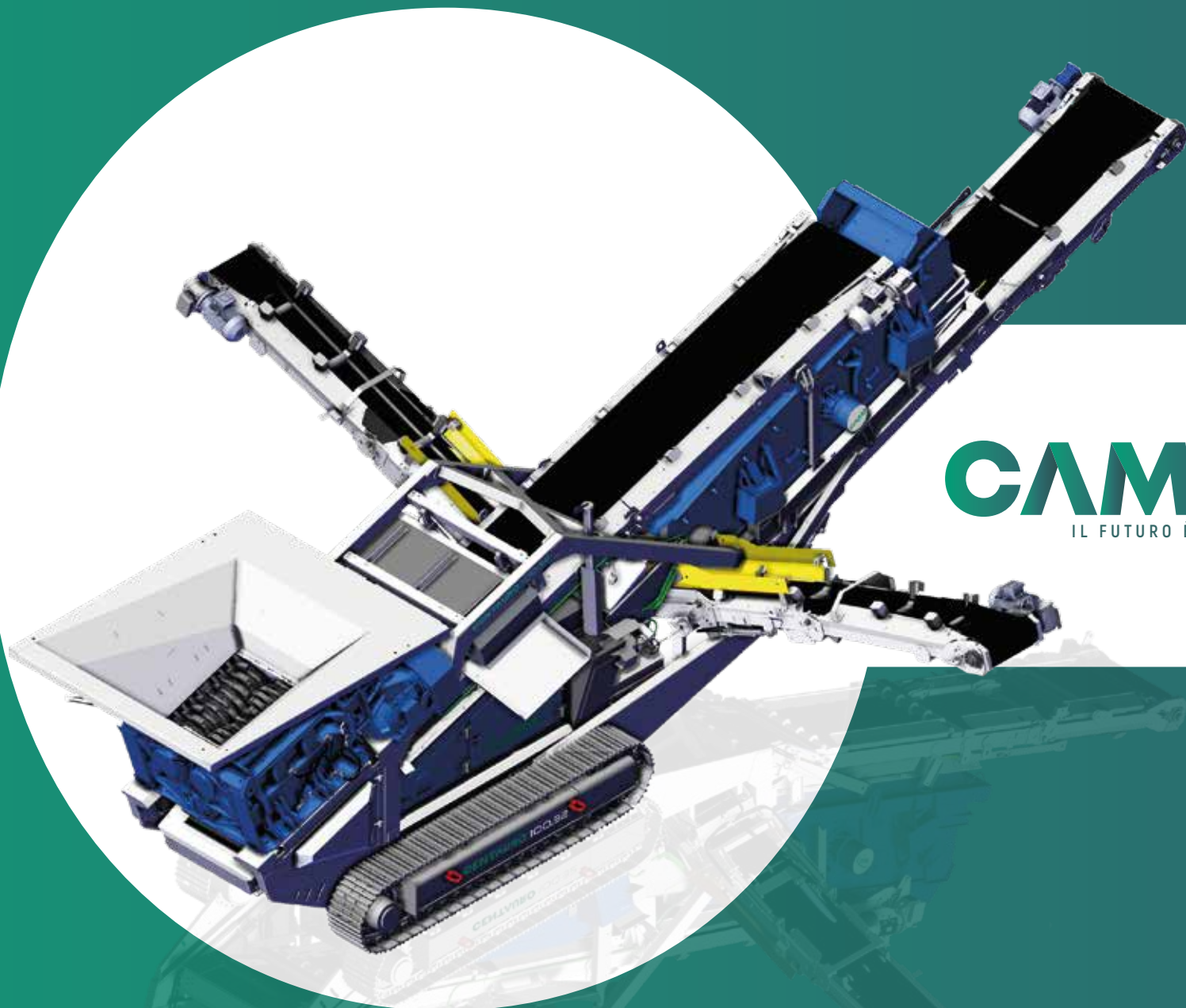




COMPANY PROFILE



CAMS
IL FUTURO È VERDE

CAMS

IL FUTURO È VERDE



TABLE OF CONTENTS

TECHNOLOGIES

SHREDDING	4
PRE-SHREDDING SYSTEM	6
CONTROL SYSTEM	8
HYBRID DRIVE TECHNOLOGY	10

CAMS™ CARE 12

ONE CLICK, ALL YOU NEED	14
-------------------------	----

CENTAURO RANGE 16

CENTAURO 100.32	18
CENTAURO L 120.56	18
CENTAURO L 120.56 APR	19
CENTAURO XL 150.56 APR	19

UTM RANGE 20

UTM 750	22
UTM 1000	22
UTM 1200	23
UTM 1500	23

UTS RANGE 24

UTS 750	26
UTS 1000	26
UTS 1200	27
UTS 1500	27

UCS RANGE 28

UCS 1200	29
CTR 1200	29

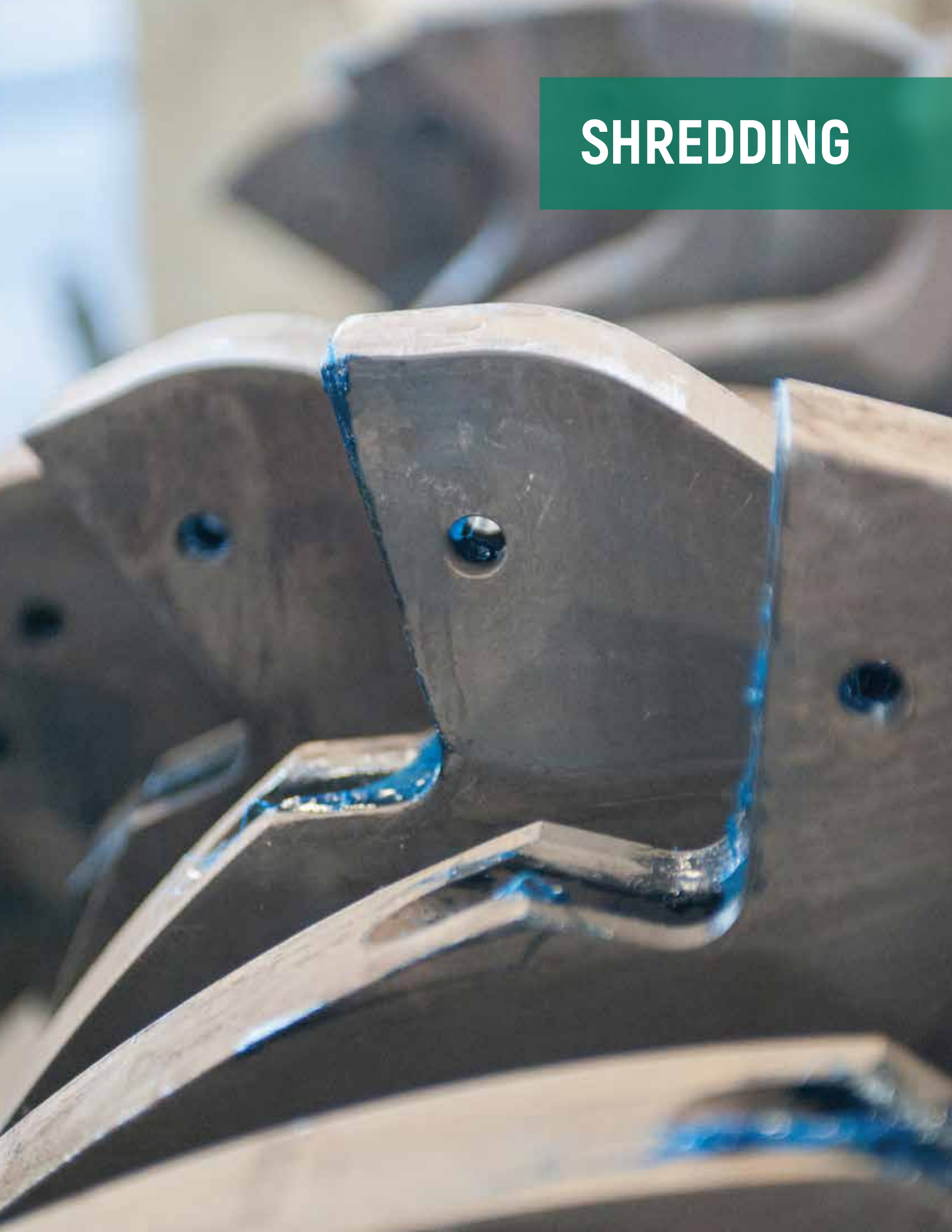
UVS RANGE 30

UVS 25/2	32
UVS 42	32
UVS 56	33

FTR RANGE 34

FTR RANGE	35
-----------	----

SHREDDING



INNOVATIVE TECHNOLOGY

CAMS™ shredders are designed to operate by exploiting the cutting effort, reducing consumption and environmental impact. The FTR and CTR ranges make it possible to reduce the volume of different types of material, making them uniformly and homogeneously sized, perfect for transport or further processing.

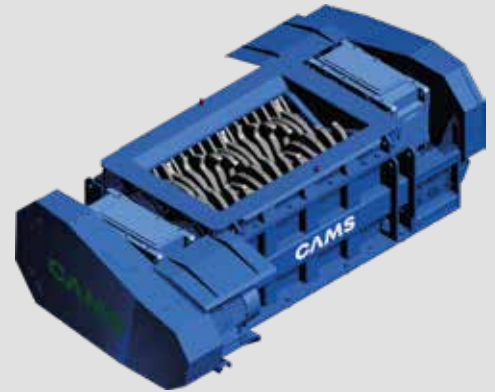
PRODUCTION QUALITY

The low rotational speed of the shafts ensures high efficiency, reducing noise pollution, dust emissions and minimising wear.

The use of special steels for the teeth of CAMS shredders lowers operating costs, ensuring maximum uptime for a long time. In addition, a patented system ensures that wear parts can be replaced without the need to de-assemble the machine.

MAXIMUM VERSATILITY

The entire range of shredders is designed to return a very high quality product from a wide variety of materials: from concrete to asphalt, for which the original grain size curve is not altered, guaranteeing 100% recycling of the bitumen.



PRIMARY SHREDDERS - FTR RANGE



SECONDARY SHREDDERS - CTR RANGE

PRE-SHREDDING SYSTEM

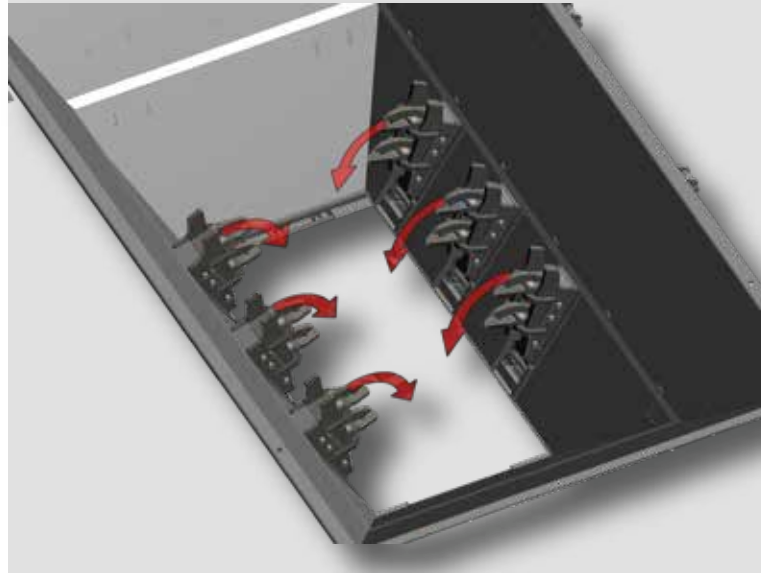


The patented CAMS™ hydraulic pusher system allows even the largest blocks to be loaded directly into the shredding unit.

The pushers keep coarser slabs and rubble firmly on the shafts of the shredder, making the action of the tines easier.

The movement of the pushers can be adjusted according to the type of material to be processed, ensuring maximum efficiency.

The system is fully automated and can be controlled remotely.

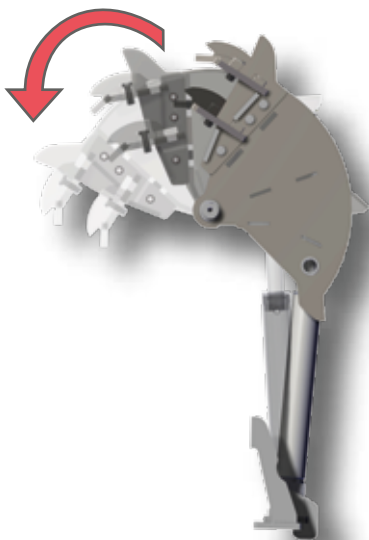


PATENT

HYDRAULIC PUSHERS

The patented hydraulic pusher system CAMS™ guarantees the shredding of the coarsest materials, even in full-electric mode.

This fully automated technology pre-shreds the bulkiest blocks inside the loading hopper, facilitating the action of the primary shredder.



EU PATENT # 16815633.9

CONTROL SYSTEM



PLC SOFTWARE

The PLC software developed by CAMS engineers allows remote control of the machine, automating the production process and making it simple and intuitive for the user.

The programme allows the recycling process to start automatically, while the activity of the entire plant is constantly monitored by the software.

TELEMETRY FEATURES

- Complete control over the mobile plant;
- Customisable functions;
- Component diagnostics and testing;
- Performance monitoring;
- Remote assistance and GPS;
- Electronic weighing system;
- Simple and intuitive human-machine interface.



INTEGRATED SOFTWARE

Using the CAMS™ control programme, it is possible to continuously monitor the operating conditions of the machine and its components, choose from a variety of settings, and set key parameters that allow for a high degree of flexibility and customisation of operating modes.

Integrated interconnection systems allow direct communication with the end customer's office and the transmission of important information such as plant operating data, location and active alarms.

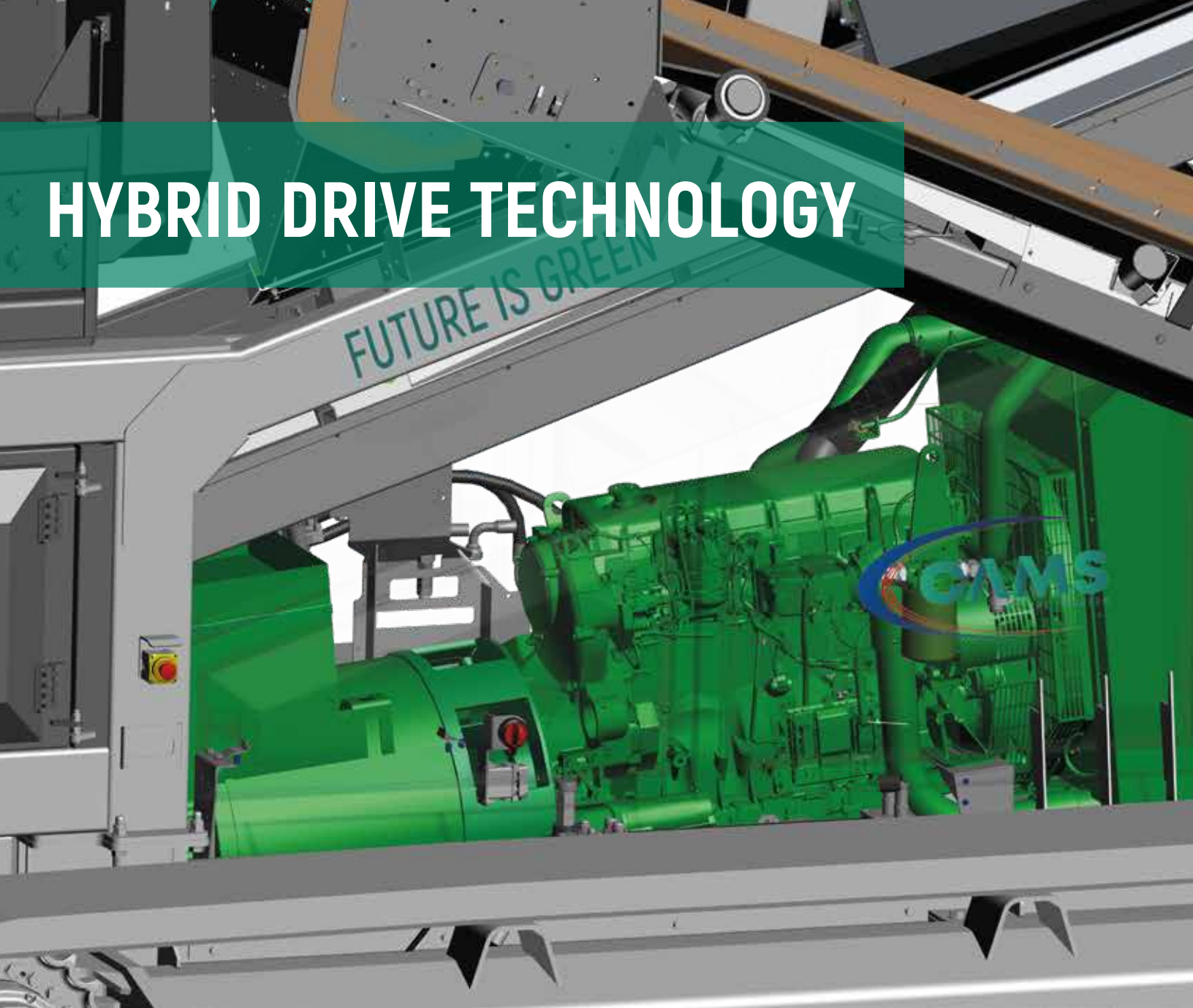


REMOTE CONTROL

Wireless control provides remote control of all functions. Its 150 metre payload allows the operator to move the machine with great precision and to choose between two possible track speeds.

The LCD monitor shows the machine's performance in real time.

HYBRID DRIVE TECHNOLOGY



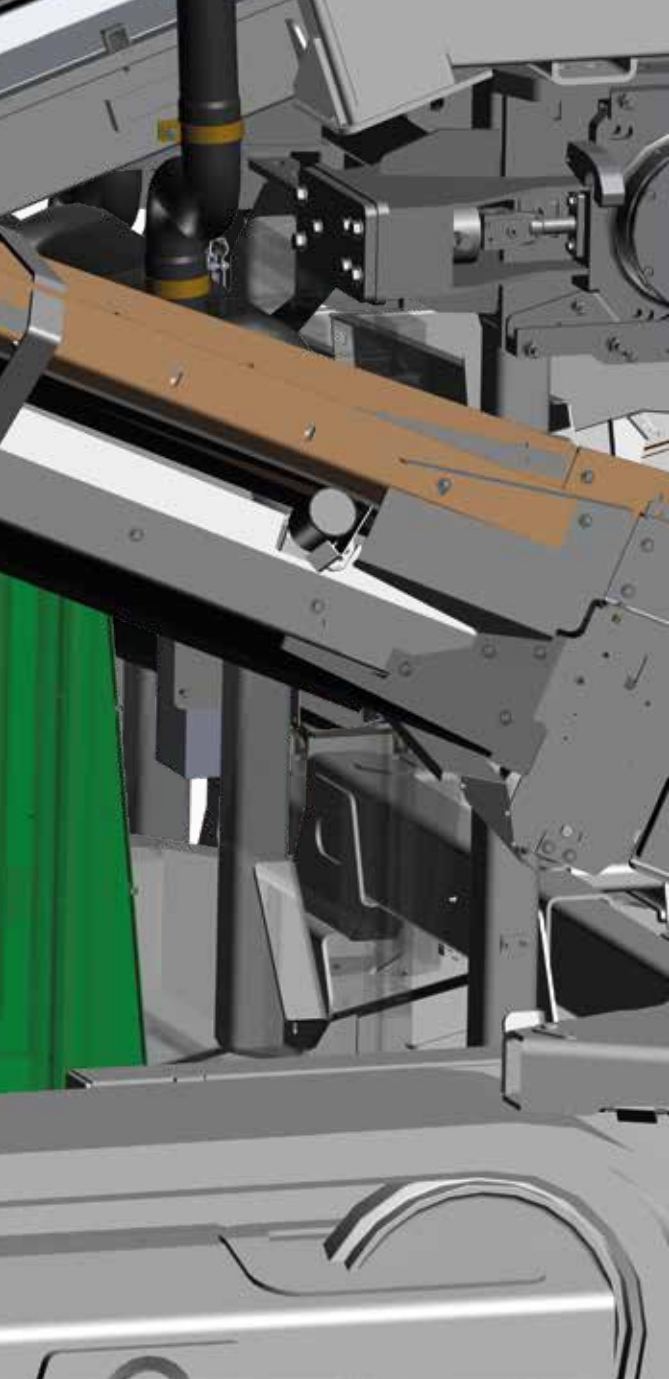
"GREEN" MACHINES

Two key words identify the CAMS™ shredder range: **Power** and **Sustainability**.

All CAMS™ mobile plants are equipped with a generator unit featuring a powerful and efficient diesel engine. The engine is coupled to an alternator to produce the electrical energy needed to run the machine, and to make it possible to power the construction site.

In order to maximise the torque that can be delivered by the diesel engine and to ensure minimum fuel consumption, it operates in steady state at a speed of 1500 rpm.

All machines can operate in 'full-electric' mode via direct on-site power supply, eliminating all CO₂ emissions



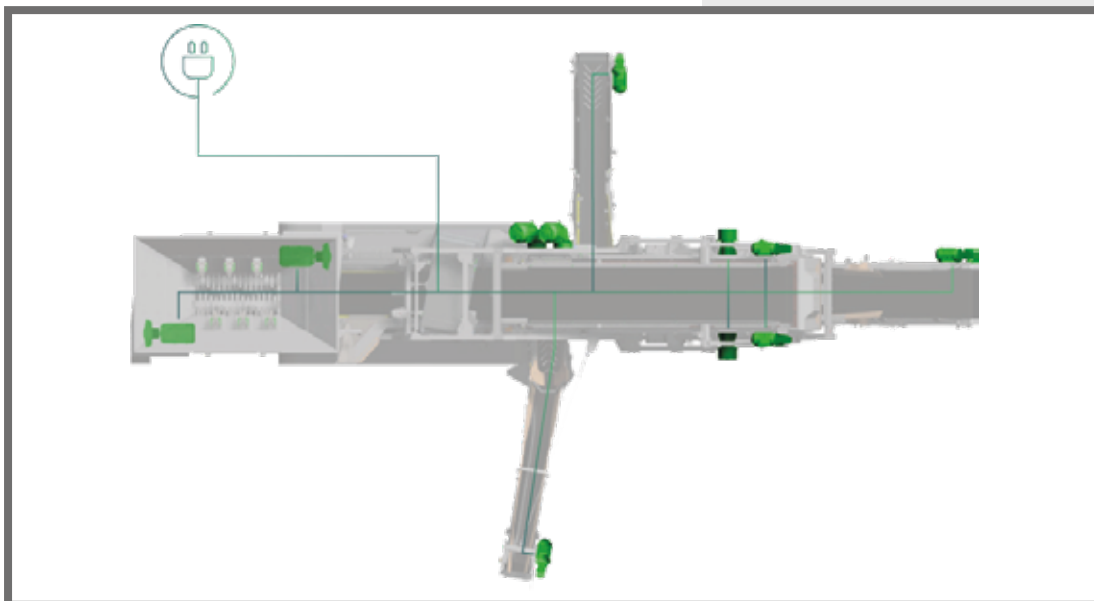
SUSTAINABILITY

CAMS™ technologies are designed to reduce environmental impact. Low dust emissions, reduced noise pollution, vibration isolation, and the possibility of switching the machine's power supply to the site's electrical grid.

POWER SUPPLY

The FTR and CTR series models are characterised by an all-electric power supply.

The recycling process reduces the use of raw materials and eliminates CO₂ emissions



CAMS CARE





AFTER SALES

AUGMENTED REALITY SUPPORT



AUGMENTED REALITY ASSISTANCE

The ARS (Augmented Reality Support) system uses augmented reality technology to put you in direct contact with a specialist technician for immediate assistance.

Using the app on smartphones, diagnostics and troubleshooting can be performed in real time, reducing time and costs.



GPS

CAMS™ machines are equipped with a GPS tracking system that can be viewed from any device

QUALITY MONITORING

- Production data;
- Online database;
- Hours of operation;
- Remote functions;
- Alarms and diagnostics;



CAMS

one click, a

STAY CO



Brochure



Video

PARTS STORE



CAMS CARE

all you need

CAMS™ E-SHOP

CAMS™ new e-shop revolutionises the distribution of spare parts; whatever the need, you will have all supplies available directly on your PC.



CONNECTED



Reserved Area



News

RANGE

CENTAURO

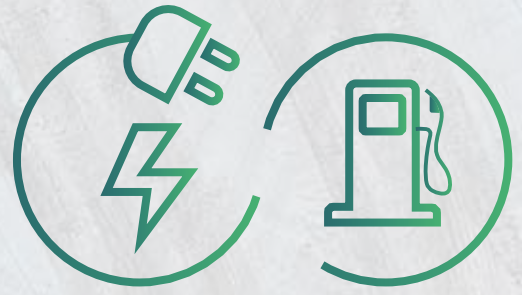
FEATURES

- Automatic material handling programmes;
- Ability to handle wet materials;
- Single diesel engine to power all components;
- Low fuel consumption;
- Designed for transport in a compact form;
- High wear resistance;
- Ability to supply electricity on site;
- Limited noise and dust emissions;
- Ability to recycle 100% of asphalt.

OPTIONAL

- Hydraulic overhangs;
- Hydraulic pushers;
- GPS;
- Electronic weighing system;
- Diesel filling pump;
- Automatic greasing system.





Hybrid Power Supply

The **CENTAURO** series can operate in fully electric mode, reducing emissions (without Diesel engine)

CENTAURO 100.32



Hopper

Capacity: 3 m³
Length: 3.00 m
Width: 2.00 m

Screen

Type: CVV032
Deck surface: m 3.2 x 1.0
Decks number: 2

Primary shredder

Range: FTR 1000
Feed opening : mm 1000 x 900

Hybrid Power Unit

Engine: CAT C4.4 Stage 5 125 kW
Alternator: MeccAlte 135 kVA
Tank capacity: 170 l

Dimensions

Length: 13 m
Height: 3.2 m
Width: 9.0 m
Weight: 24'500 kg

Output potential

120 t/h

CENTAURO L 120.56



Hopper

Capacity: 3.5 m³
Length: 2.50 m
Width: 2.30 m

Screen

Type: CVV056
Deck surface: m 4.2 x 1.2
Decks number: 2

Primary shredder

Range: FTR 1200
Feed opening : mm 1200 x 900

Hybrid Power Unit

Engine: CAT C7.1 Stage 5 225 kW
Alternator: MeccAlte 350 kVA
Tank capacity: 230 l

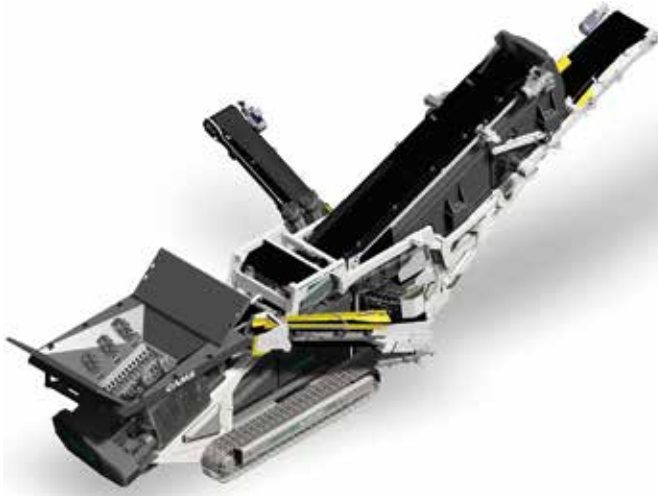
Dimensions

Length: 15.5 m
Height: 4.70 m
Width: 6.50 m
Weight: 36'100 kg

Output potential

180 t/h

CENTAURO L 120.56 APR



Hopper

Capacity: 3.50 m³
Length: 2.50 m
Width: 2.30 m

Screen

Type: CVV056
Deck surface: mm 4300 x 1300
Decks number: 2

Primary shredder

Range: FTR 1200
Feed opening: mm 1200 x 900

Hybrid Power Unit

Engine: CAT C9.3 Stage 5 285 kW
Alternator: MeccAlte 400 kVA
Tank capacity: 230 l

Secondary shredder

Range: CTR 1200
Feed opening : mm 1200 x 900

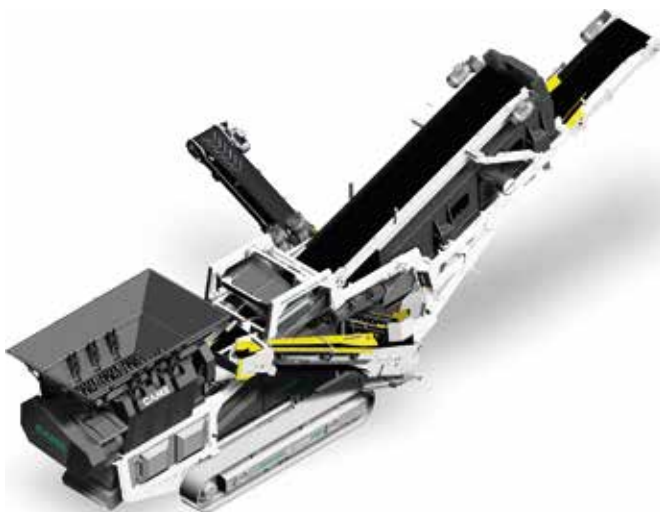
Dimensions

Length: 15.3 m
Height: 4.80 m
Width: 6.30 m
Weight: 36'300 kg

Output potential

180 t/h

CENTAURO XL 150.56 APR



Hopper

Capacity: 3.80 m³
Length: 3.50 m
Width: 2.00 m

Screen

Type: CVV056
Deck surface: mm 4300 x 1300
Decks number: 2

Primary shredder

Range: FTR 1500
Feed opening: mm 1500 x 900

Hybrid Power Unit

Engine: CAT C9.3 Stage 5 285 kW
Alternator: MeccAlte 400 kVA
Tank capacity: 230 l

Secondary shredder

Range: CTR 1200
Feed opening: mm 1200 x 900

Dimensions

Length: 15.3 m
Height: 4.80 m
Width: 6.30 m
Weight: 42'000 kg

Output potential

250 t/h

RANGE

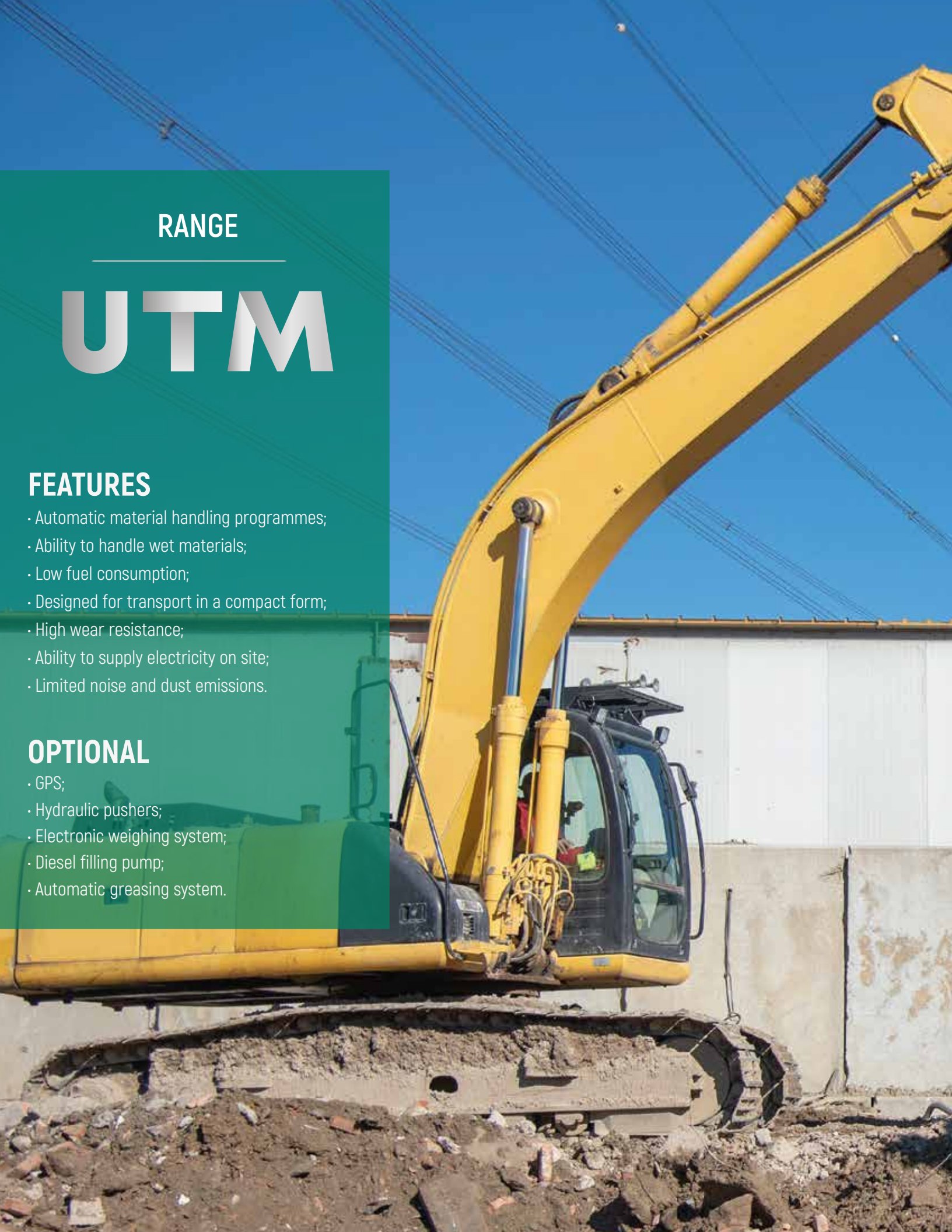
UTM

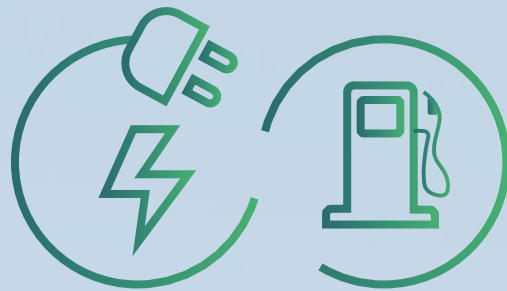
FEATURES

- Automatic material handling programmes;
- Ability to handle wet materials;
- Low fuel consumption;
- Designed for transport in a compact form;
- High wear resistance;
- Ability to supply electricity on site;
- Limited noise and dust emissions.

OPTIONAL

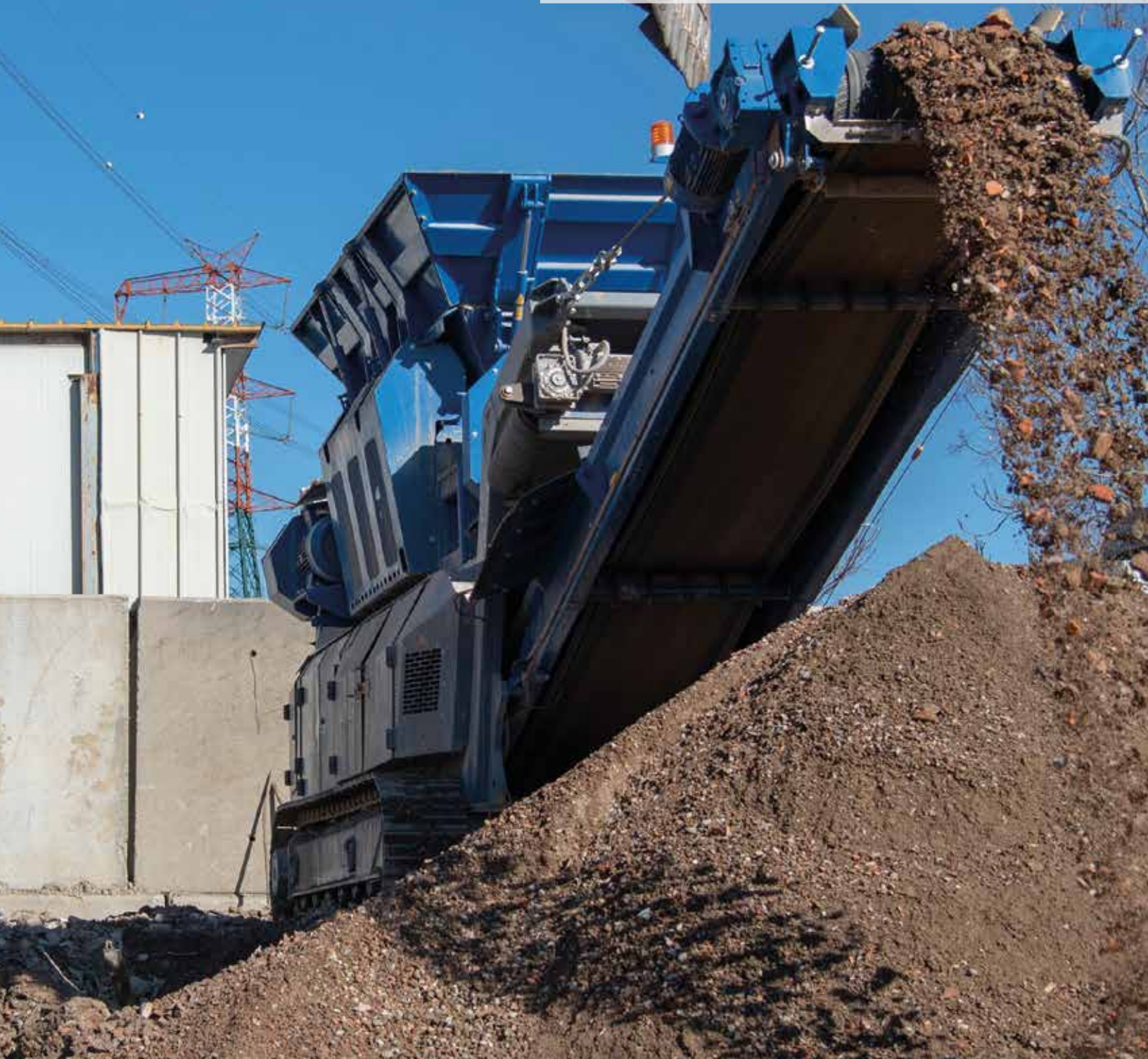
- GPS;
- Hydraulic pushers;
- Electronic weighing system;
- Diesel filling pump;
- Automatic greasing system.



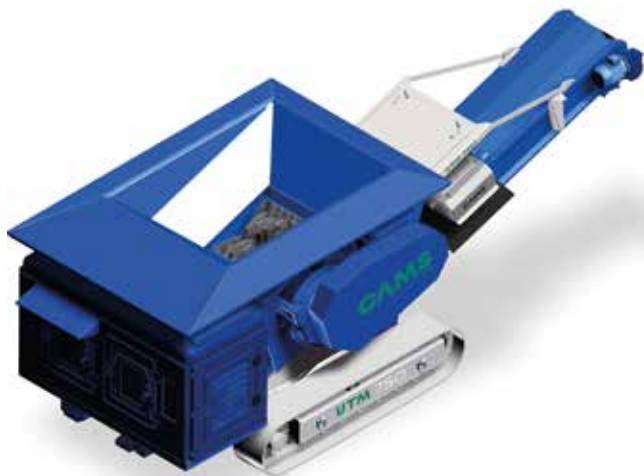


Hybrid Power Supply

The UTM series can operate in fully electric mode, reducing emissions (without Diesel engine)



UTM 750



Hopper

Capacity: 1.50 m³
Length: 2.30 m
Width: 1.70 m

Primary Conveyor

Width: 600 mm
Length: 5000 mm

Primary shredder

Range: FTR 750
Feed opening: mm 750 x 900

Hybrid Power Unit

Engine: FTP F36 Stage V 90kW
Alternator: Linz 80 kVA
Tank capacity: 170 l

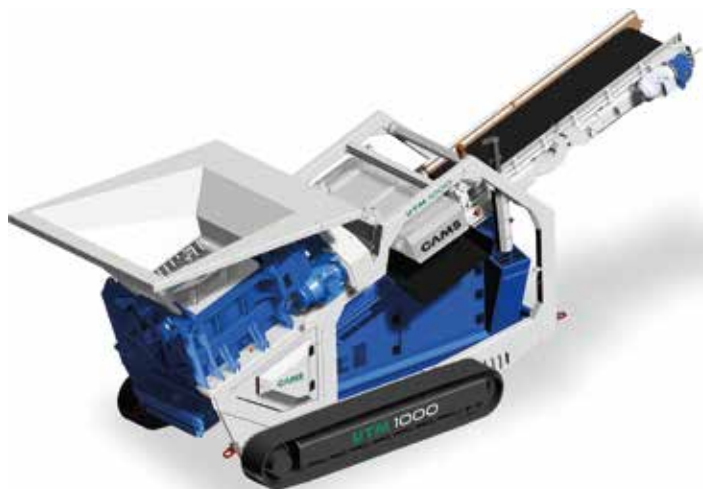
Dimensions

Length: 7.00 m
Height: 2.50 m
Width: 2.50 m
Weight: 11'500 kg

Output potential

80 t/h

UTM 1000



Hopper

Capacity: 3.00 m³
Length: 3.00 m
Width: 2.00 m

Primary Conveyor

Width: 600 mm
Length: 7000 mm

Primary shredder

Range: FTR 1000
Feed opening: mm 1000 x 900

Hybrid Power Unit

Engine: FTP N45 Stage V 100kW
Alternator: MeccAlte 135 kVA
Tank capacity: 170 l

Dimensions

Length: 6.70 m
Height: 3.00 m
Width: 2.55 m
Weight: 15'500 kg

Output potential

120 t/h

UTM 1200



Hopper

Capacity: 3.50 m³
Length: 3.20 m
Width: 2.00 m

Primary Conveyor

Width: 800 mm
Length: 7000 mm

Primary shredder

Range: FTR 1200
Feed opening: mm 1200 x 900

Hybrid Power Unit

Engine: FTP N45 Stage V 100kW
Alternator: MeccAlte 135 kVA
Tank capacity: 170 l

Dimensions

Length: 6.80 m
Height: 3.10 m
Width: 2.55 m
Weight: 17'500 kg

Output potential

150 t/h

UTM 1500



Hopper

Capacity: 3.80 m³
Length: 3.50 m
Width: 2.00 m

Primary Conveyor

Width: 800 mm
Length: 8000 mm

Primary shredder

Range: FTR 1500
Feed opening: mm 1500 x 900

Hybrid Power Unit

Engine: CAT C71 Stage V 200kW
Alternator: MeccAlte 350 kVA
Tank capacity: 170 l

Dimensions

Length: 10.55 m
Height: 3.10 m
Width: 2.50 m
Weight: 22'650 kg

Output potential

180 t/h



RANGE

UTS

FEATURES

- Automatic material handling programmes;
- Ability to handle wet materials;
- Designed for transport in a compact form;
- High wear resistance;
- Power supply;
- Limited noise and dust emissions.

OPTIONAL

- GPS;
- Hydraulic pushers;
- Electronic weighing system;
- Automatic greasing system.



Power Supply

UTS 750



Hopper

Capacity: 1.50 m³
Length: 2.30 m
Width: 1.70 m

Primary conveyor

Width: 600 mm
Length: 5000 mm

Shredder

Range: FTR 750
Feed opening: mm 750 x 900

Power supply

Power: 30 kW

Dimensions

Length: 7.00 m
Height: 2.50 m
Width: 2.50 m
Weight: 11'000 kg

Output potential

80 t/h

UTS 1000



Hopper

Capacity: 3.00 m³
Length: 3.00 m
Width: 2.00 m

Primary conveyor

Width: 800 mm
Length: 8000 mm

Shredder

Range: FTR 1000
Feed opening: mm 1000 x 900

Power supply

Power: 45 kW

Dimensions

Length: 8.70 m
Height: 2.70m
Width: 2.50 m
Weight: 13'000 kg

Output potential

120 t/h

UTS 1200



Hopper

Capacity: 3.50 m³
Length: 3.20 m
Width: 2.00 m

Primary conveyor

Width: 800 mm
Length: 8000 mm

Shredder

Range: FTR 1200
Feed opening: mm 1200 x 900

Power supply

Power: 45 kW

Dimensions

Length: 8.90 m
Height: 2.70 m
Width: 2.50 m
Weight: 15'000 kg

Output potential

150 t/h

UTS 1500



Hopper

Capacity: 3.80 m³
Length: 3.50 m
Width: 2.00 m

Primary conveyor

Width: 800 mm
Length: 8000 mm

Shredder

Range: FTR 1500
Feed opening: mm 1500 x 900

Power supply

Power: 70 kW

Dimensions

Length: 9.30 m
Height: 3.10 m
Width: 2.50 m
Weight: 15'000 kg

Output potential

180 t/h

RANGE

UCS

FEATURES

- Automatic material handling programmes;
- Ability to handle wet materials;
- Designed for transport in a compact form;
- High wear resistance;
- Limited noise and dust emissions;
- Ability to recycle 100% of asphalt.

OPTIONAL

- GPS;
- Electronic weighing system;
- Automatic greasing system;
- Magnetic separator.



Power Supply



UCS 1200



Secondary shredder

Range: CTR 1200

Feed opening: mm 1200 x 900

Power supply

Power: 50 kW

Conveyor

Width: 600 mm

Length: 8000 mm

Dimensions

Length: 8.20 m

Height: 3.10 m

Width: 1.90 m

Weight: 5'500 kg

CTR 1200



Secondary shredder

Range: CTR 1200

Feed opening: mm 1200 x 900

Output potential

120 t/h

Power supply

Power: 45 kW



RANGE

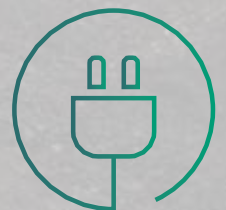
UVS

FEATURES

- Ability to handle wet materials;
- Designed for transport in a compact form;
- High wear resistance;
- Limited noise and dust emissions;
- Ability to recycle 100% of asphalt.

OPTIONAL

- Feeding Hopper;
- GPS;
- Electronic weighing system;
- Automatic greasing system.



Power Supply

UVS 25/2



Screen

Type: CVW025
Deck surface: mm 1000 x 2500
Decks number: 2

Coarse material conveyor

Width: 500 mm
Length: 8000 mm

Medium material conveyor

Width: 500 mm
Length: 8000 mm

Fine material conveyor

Width: 800 mm
Length: 8000 mm

Power supply

Power: 25 kW

UVS 42



Screen

Type: CVW042
Deck surface: mm 1200 x 3500
Decks number: 2

Coarse material conveyor

Width: 800 mm
Length: 8000 mm

Medium material conveyor

Width: 500 mm
Length: 8000 mm

Fine material conveyor

Width: 800 mm
Length: 8000 mm

Power supply

Power: 32 kW

UVS 56



Screen

Type: CVV056
Deck surface: mm 1300 x 4300
Decks number: 2

Coarse material conveyor

Width: 800 mm
Length: 8000 mm

Medium material conveyor

Width: 800 mm
Length: 8000 mm

Fine material conveyor

Width: 800 mm
Length: 8000 mm

Power supply

Power: 40 kW

RANGE

FTR

FEATURES

- Automatic material handling programmes;
- Ability to handle wet materials;
- Designed for transport in a compact form;
- High wear resistance;
- Limited noise and dust emissions;

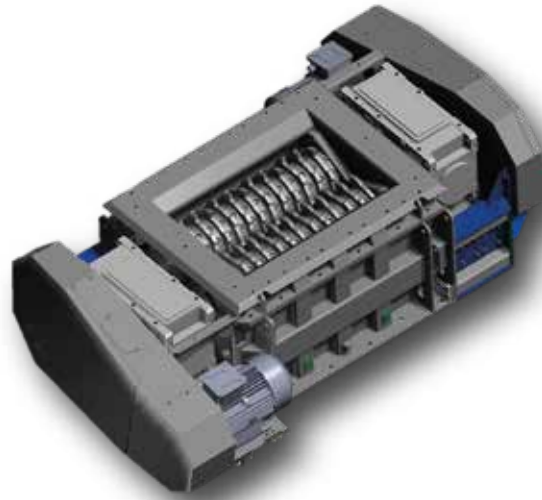
OPTIONAL

- Hydraulic pushers;
- GPS;
- Automatic greasing system.



Power Supply





FTR 750

Dimensions

Length: 2.50 m

Width: 2.50 m

Height: 1.10 m

Output potential

75 t/h

FTR 1000

Dimensions

Length: 3.30 m

Width: 2.50 m

Height: 1.10 m

Output potential

120 t/h

FTR 1200

Dimensions

Length: 3.60 m

Width: 2.50 m

Height: 1.10 m

Output potential

180 t/h

FTR 1500

Dimensions

Length: 3.90 m

Width: 2.50 m

Height: 1.10 m

Output potential

255 t/h



CAMS

IL FUTURO È VERDE



CAMS SRL

Via Giulio Golini, 301

40024 Castel San Pietro Terme, Bologna - Italy



+39 051 69 46 611



info@camsrsl.it



camsrecycling.com