

Data subject to change without prior notice
Edition 10/2022 © 2022 JMG Cranes S.p.A. All rights reserved
Rev. 2 - 10/22



Electric Pick & Carry Cranes



MC 45S (metric)
Max Capacity 4,500 Kg



Barcelona
938498388

Madrid
918951758

Valencia
961344394

Vitoria
945365601

www.transgruas.com
info@transgruas.com



MC 45S

- RADIO REMOTE CONTROLLED
- FRONT-WHEELS DRIVE WITH COUNTER ROTATION
- REMOVABLE COUNTERWEIGHT
- SEQUENTIAL BOOM

Options :

- HYDRAULIC WINCH
- HYDRAULIC JIB
- NON-MARKING TIRES
- ATEX CONVERSIONS
- CUSTOMIZED PAINTING

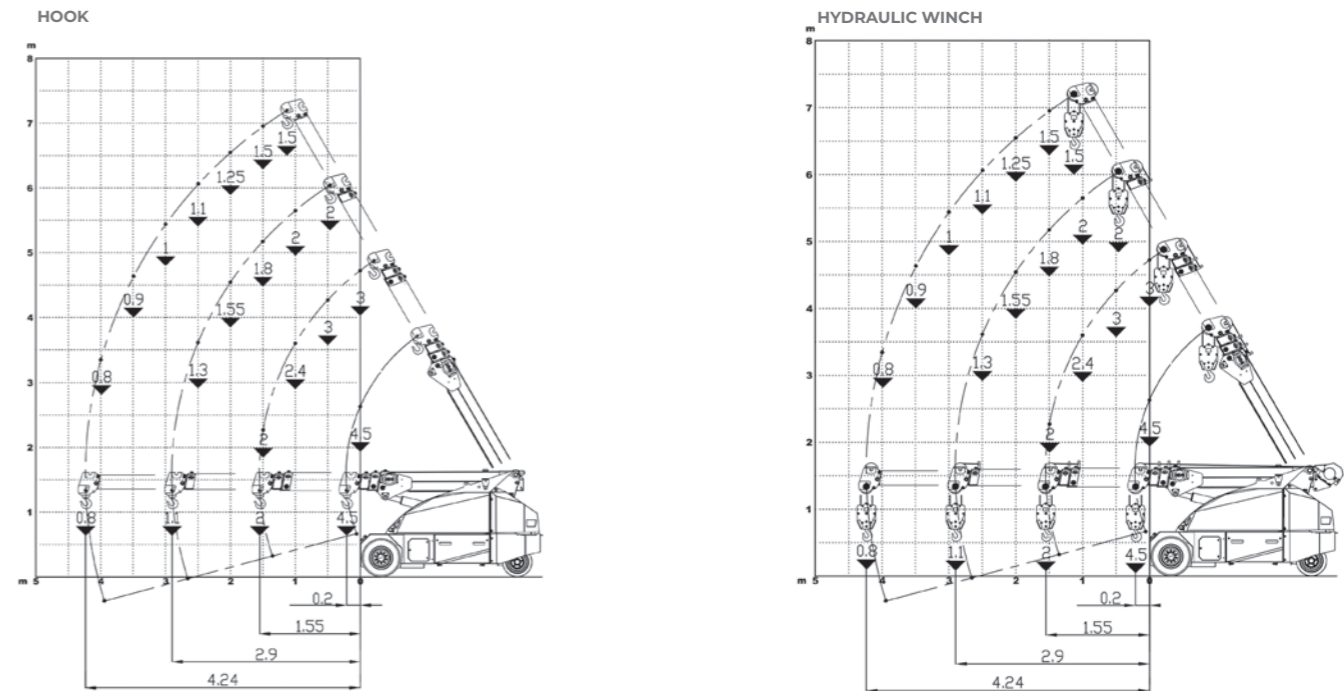


Technical features

| | |
|-----------------|----------------|
| Max Capacity kg | 4,500 |
| Dimensions mm | 2775x1200x1648 |

| | |
|--|---|
| Front-wheels drive. 2 electric motors AC 3 kW 48V Insulation class H | LMI. Electronic safe load indicator and tilting moment limiter |
| Total Kg. 4,900 Removable counterweights Kg.1,360 | Automatic braking system on all wheels |
| 48 V - 600 Ah 8 working hours | Fabricated from preformed and welded quality steel plate |
| Front nr. 2 superelastic 23x10-12" Rear nr. 2 superelastic 18x7-8" | +60°/-15° |
| Rear Steering angle -90°/+90° | Motor driven pump 9 kW - 48 V AC, Insulation class H |

Load charts



EU Standards CE

| | |
|--|--|
| | UNI ISO 4301-2: A1 |
| | 2006/42 CE-2014/30 UE- 2000/14-4301 -1:A1 e and subsequent modifications |
| | EN 13000:2014 ANSI/ASME B30.5-2011 e and subsequent modifications |

Dimensions

