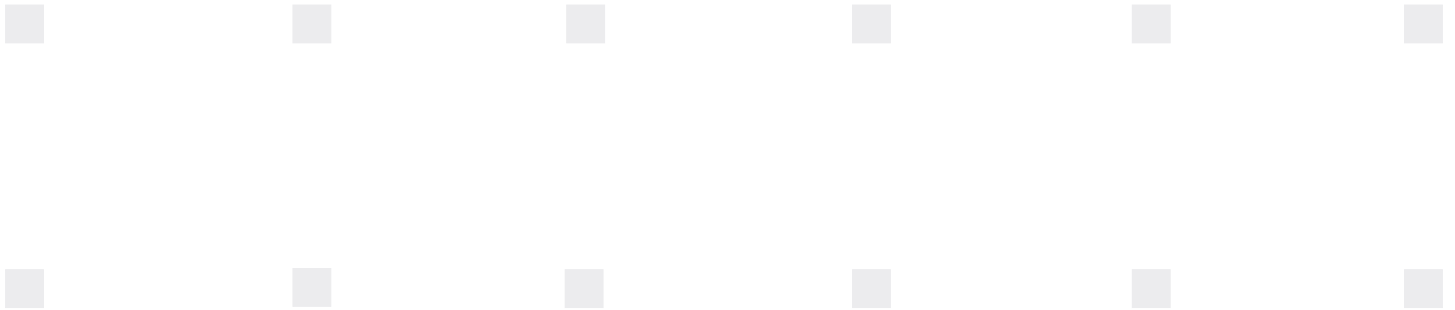


# PALLMANN

---

## Drum Debarker PDD



# Drum Debarker PDD

## Areas of application

Logs have to be debarked in an economical and reliably manner to fulfil the requirements of modern product lines. Excellent debarking performance is specially imposed by the MDF-OSB and wood pellet industry.

The Pallmann Drum debarker, type PDD is preferable used for medium and large log diameters in combination with high throughput capacities.

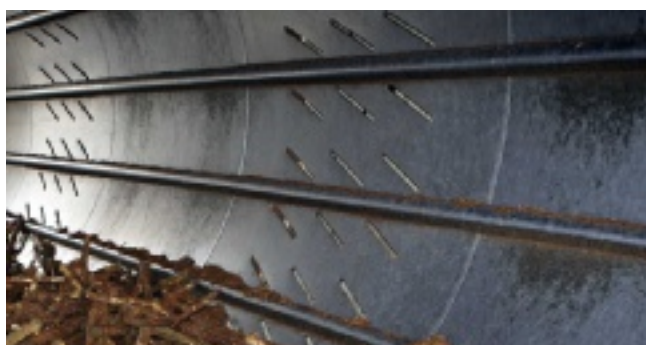
## Material infeed

According to the local conditions the infeed to the drum can be effected either by gravity feed through a chute or horizontally by a conveyor.



## Debarking

The debarking drum is a steel bodied construction in which the entrainers and bark removal slots are arranged as a standard feature. The retention time of the wood in the drum determines the degree of debarking and can regulated by means of the exit door opening and the speed of the debarking drum (as an option it can be regulated by means of a frequency converter). As an option the drum can also be delivered without the bark removal slots whereby in doing so the bark would be separated after the debarking drum.



## Discharge

Behind the discharge gate the logs are typically transported by a chain conveyor to the subsequent cleaning roller conveyor.



## Robust and Modular

The robust modular construction is designed as single units which are then assembled. Individual large scale assemblies can be fabricated on site.

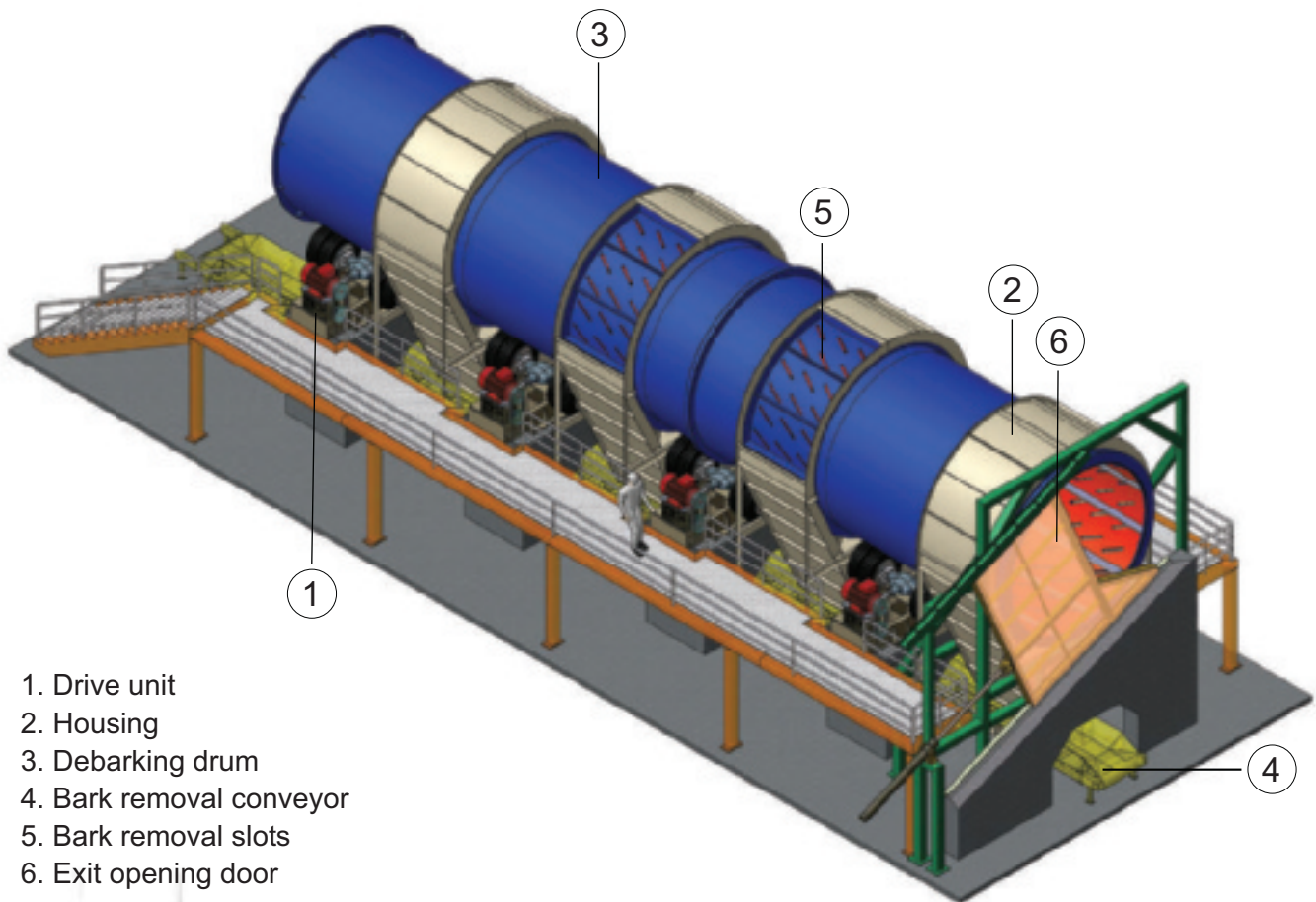
## Strong and Reliable - the drive design

The main component of the machine, the debarking drum, is driven by strong electric motors whose force is transmitted by means of differentials used in truck construction. The direct drive of the drum, as well as the bearing support, is taken care of by special tire pairs. The individual drive units are delivered completely assembled, which allows for a quick, smooth setup on site.



## Decisive Characteristics

- Efficient and accurate debarking at high performance
- Strong and Reliable
- Adjustable debarking degree
- High performance, durable drive units
- Modular design, can be partially fabricated on site



1. Drive unit
2. Housing
3. Debarking drum
4. Bark removal conveyor
5. Bark removal slots
6. Exit opening door

## Technical data:

Type	PDD		
Drum diameter	m		3.0 - 5.0
Drum length	m		12 - 32
Log length	m		1 - 8
Capacity	m <sup>3</sup> /h		40 - 350





## The Pallmann Group

The Pallmann Group is the leading manufacturer of size reduction machinery for the wood products industry. Pallmann Maschinenfabrik designs, manufactures and supplies tailor-made, individual or complete solutions for the processing of raw material for MDF, OSB and particleboard plants. At its headquarters in Zweibrücken, Pallmann company operates the world's largest research and development center for size reduction technology as well as a training and service center. More than 130 test machines are available for the preparation of various raw materials including subsequent laboratory analysis on individual scale. In addition to the manufacturing plants in Europe, North- and South America, the Pallmann group has a worldwide sales and service network.



## The Pallmann Program

### Engineering and Service:

Design and Manufacturing  
Research and development  
Tests at industrial scale  
Laboratory analysis  
Worldwide service  
Spare parts  
Control systems  
Process monitoring  
Installation and start-up  
Maintenance and repair  
Project Management

### System solutions for:

Flake production  
Fiber production  
OSB-production  
Recycling  
Annual plants preparation  
Thermal usage

### Single machines:

Debarkers  
Universal flakers  
Long log flakers  
Disc chippers  
Drum chippers  
Knife ring flakers  
Double stream mills  
Hammer mills  
Drum shredders  
Bale breakers  
Depithers  
Refiners  
Sifting-/classifying systems  
Chip washing systems  
Re-chippers  
Pre-crushers  
Impact hammer mills  
Screen ring mills  
Wing beater mills

PALLMANN America Inc.  
6420-A1, Rea Rd. Suite 335 Charlotte  
NC 28277  
USA  
Phone +1 704 543 4400  
Fax +1 704 543 5580  
E-mail: [sales@pallmannamerica.com](mailto:sales@pallmannamerica.com)  
[www.pallmannamerica.com](http://www.pallmannamerica.com)

PALLMANN do Brasil Ind. e Com. Ltda.  
Av. Presidente Juscelino, 11 56  
09950-370 Diadema S.P.  
Brasil  
Phone +55 11 4075 3044  
Fax +55 11 4075 4968  
E-mail: [pallmann@pallmann.com.br](mailto:pallmann@pallmann.com.br)  
[www.pallmann.com.br](http://www.pallmann.com.br)

PALLMANN Moskau Office  
Leninskij prospekt dom 158  
Office Nr. 206  
119571 Moskau  
Russland  
Phone +7 495 232 15 21  
Fax +7 495 232 15 22  
E-mail: [info@pallmann.ru](mailto:info@pallmann.ru)

PALLMANN Maschinenfabrik GmbH & Co.KG  
Wolfslochstraße 51  
66482 Zweibrücken  
Germany  
Phone +49 6332 802 0  
Fax +49 6332 802 511  
E-mail: [wood@pallmann-online.de](mailto:wood@pallmann-online.de)  
[www.pallmann.eu](http://www.pallmann.eu)

PALLMANN Beijing Representative Office  
Unit 13, 6th Floor of Tower A  
Beijing Cofco Plaza  
No.8, Jianguomennei Dajie, Dongcheng District  
Beijing, China  
Phone +86 10851 16826  
Fax +86 10851 16825  
E-mail: [info@pallmann.com.cn](mailto:info@pallmann.com.cn)