



VTS SPARE PARTS MANUAL

DAY BY DAY
WE IMPROVE
THE WORLD OF
COLLECTING

DRIED FRUIT AND
OLIVE COLLECTORS



XT10 CLASSIC PNA/DGA

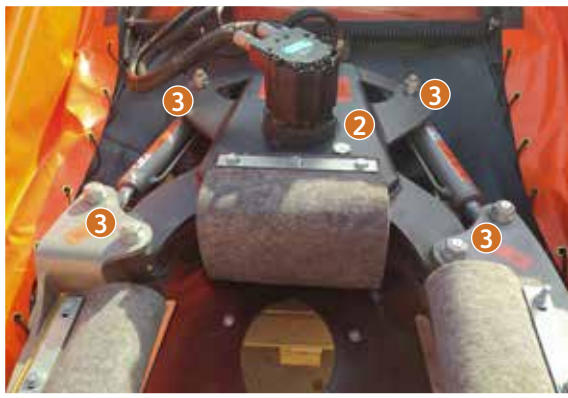
www.agromelca.com



1. Vibration Equipment

1.1. Vibrating Head

1.1.1. CENTRAL BODY



COMPLETE HEAD Ref. V110000

- ① SILENT BLOCKS (X2) Ref. V111008
- ② CENTRAL BOX Ref. V111011
- ③ BOLTS (X4) Ref. V112103
NUT (X4) Ref. V113104



- ④ SILENT BLOCKS PINCER FASTENING (X2) Ref. V111009

NOTE: for HYDRAULIC MOTOR spare parts, it is necessary to indicate MAKE and MODEL, DISPLACEMENT or MACHINE FRAME NO.

1.1.2. MOTOR ASSEMBLY, COVERS AND COUNTERWEIGHT



- 1 MOTOR ASSEMBLY Ref. V112020
- 2 TOP COVER Ref. V112041

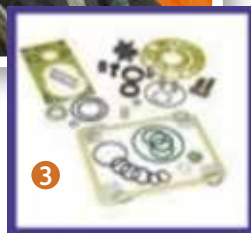


- 3 TOP COVER Ref. V112041
- 4 SEEGER CIRCLIP (x2) Ref. V112047
- 5 BOTTOM COVER Ref. V112042
- 6 TOP COVER BUSHING Ref. V112043
- 7 BOTTOM COVER BUSHING Ref. V112044
- 8 ROLLER BEARINGS (x2) Ref. V112045
- 9 RETAINERS (x2) Ref. V112046

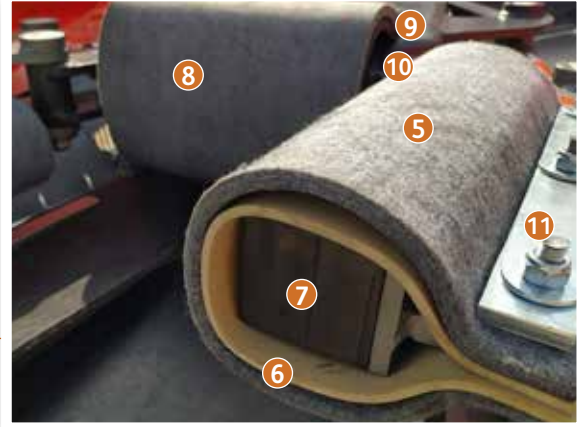
1.1.3. HYDRAULIC CYLINDERS



- 1 PINCER CLAMPING CYLINDER Ø70 (X2) Ref. V113200
- 2 BOLT (X2) Ref. V113103 / NUT (X2) Ref. V113104
- 3 Ø70 CYL SEAL KIT (X2) Ref. V113202



1.1.4. YOUNG TREE SHAFT CLAMPING ARM ASSEMBLY REF. 114200



- 1 COMPLETE RIGHT ARM Ref. V114210
- 2 FRAME RIGHT ARM Ref. V114211
- 3 COMPLETE LEFT ARM Ref. V114220
- 4 FRAME LEFT ARM V114221
- 5 OUTER GUARD CLAMPING ARM (X2)
Textile Material Ref. V114221
- 6 INNER GUARD CLAMPING ARM (X2)
Soft Material Ref. V114263
Caramel Material Ref. V114264
- 7 BLOCK CLAMPING ARM (X2)
Soft Material Ref. V114232
- 8 OUTER GUARD TRUNK STOP
Textile Material Ref. V114180
Soft Material Ref. V114183
- 9 INNER GUARD TRUNK STOP
Medium Material Ref. V114192
Soft Material Ref. V114193
- 10 TRUNK STOP BLOCK
General Material Ref. V114171
Soft Material Ref. V114193
- 11 FIXING PLATES FOR SKIRTS (X6) Ref. V114142

NOTE: for CLAMPING ARM spare parts, it is necessary to indicate the MACHINE MODEL or FRAME NO.

1.2. Z10X Vibrating Head

1.2.1. CENTRAL BODY



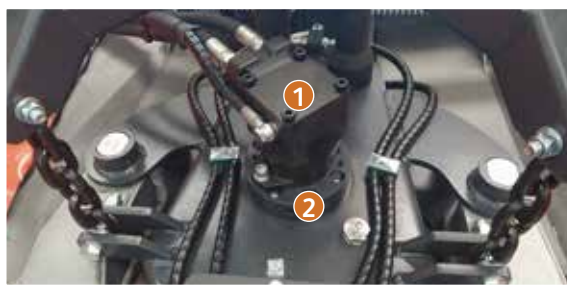
COMPLETE HEAD Ref. No. V110000

- ① SILENT BLOCKS (X2) Ref. V111008
- ② CENTRAL BOX Ref. V110001
- ③ BOLTS (X4) Ref. V112103
NUT (X4) Ref. V113104



- ④ SILENT BLOCKS PINCER FASTENING (X2)
Ref. V111009

1.2.2. MOTOR, COVERS AND COUNTERWEIGHT ASSEMBLY



- ① MOTOR ASSEMBLY Ref. V112020
- ② TOP COVER Ref. V112041



- ③ TOP COVER Ref. V112041
- ④ SEEGER CIRCLIP (x2) Ref. V112047
- ⑤ BOTTOM COVER Ref. V112042
- ⑥ TOP COVER BUSHING Ref. V112043
- ⑦ BOTTOM COVER BUSHING Ref. V112044
- ⑧ ROLLER BEARINGS (x2) Ref. V112045
- ⑨ RETAINERS (x2) Ref. V112046

NOTE: for HYDRAULIC MOTOR spare parts, it is necessary to indicate MAKE and MODEL, CYLINDER or MACHINE FRAME no.

1.2.3. HYDRAULIC CYLINDERS



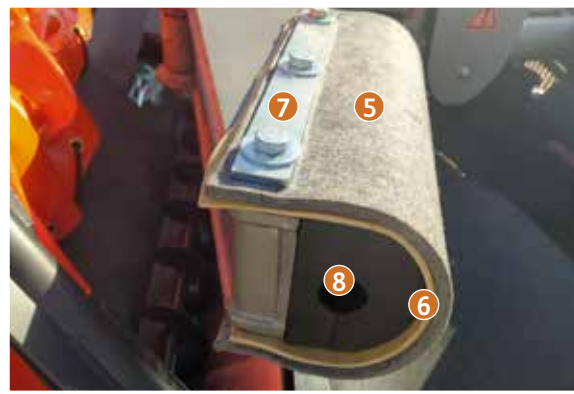
- ❶ PINCER CLAMPING CYLINDER (X2) Ref. V113300
- ❷ BOLT (X2) Ref. V113103
NUT (X2) Ref. V113104
- ❸ Ø70 CYL SEAL KIT (X2) Ref. V113302



1.2.3. CLAMPING ARM ASSEMBLY Z10X REF. 114300



- ❶ COMPLETE RIGHT ARM Ref. V114310
- ❷ RIGHT ARM FRAME Ref. V114311
- ❸ COMPLETE LEFT ARM Ref. V114320
- ❹ FRAME LEFT ARM V114221
- ❺ OUTER GUARD CLAMPING ARM (X2)
Material Textile Ref. V114351



- ❻ INNER GUARD CLAMPING ARM (X2)
Soft Material Ref. V114363
Caramel Material Ref. V114364
- ❼ ARM GUARD PLATES (X4) Ref. V114142
- ❽ BLOCKS CLAMPING ARM (X2)
General Material Ref. V114331
Soft Material Ref. V114333

1.3. Head Swivel Support (Three-Point or Z10X)

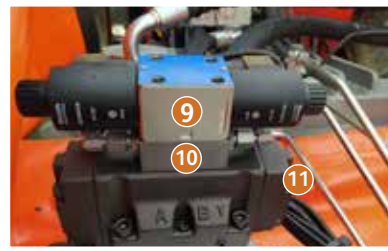
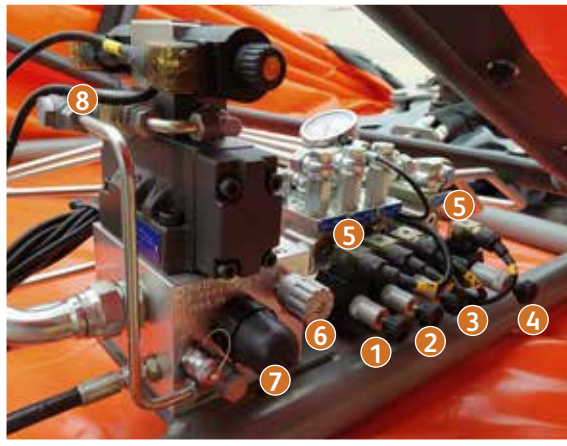


- ❶ CHAIN Ref. V111003
- ❷ BUSHINGS Ref. V111005
- ❸ VIBRATION EQUIPMENT SUPPORT Ref. V121151
- ❹ VTS MACHINE SUPPORT Ref. V121170
- ❺ SILENTBLOCKS (X2) Ref. V111008

NOTE: for CLAMPING ARMS spare parts, it is necessary to indicate the MACHINE MODEL or FRAME NO.

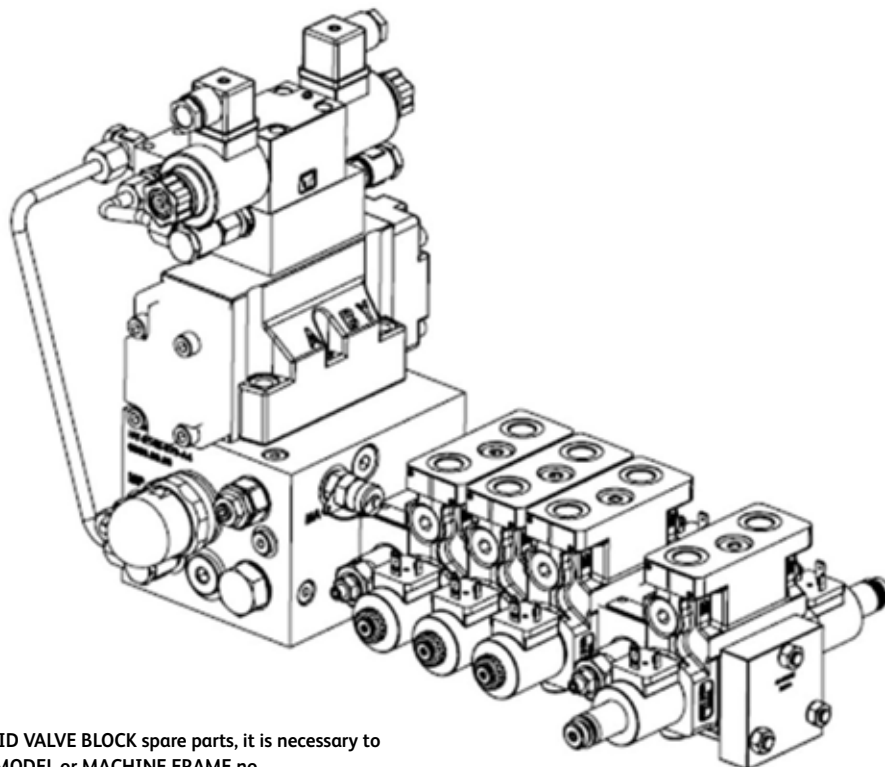
1.4. Chassis hydraulic block

1.4.1. MOTOR, COVERS AND COUNTERWEIGHT ASSEMBLY



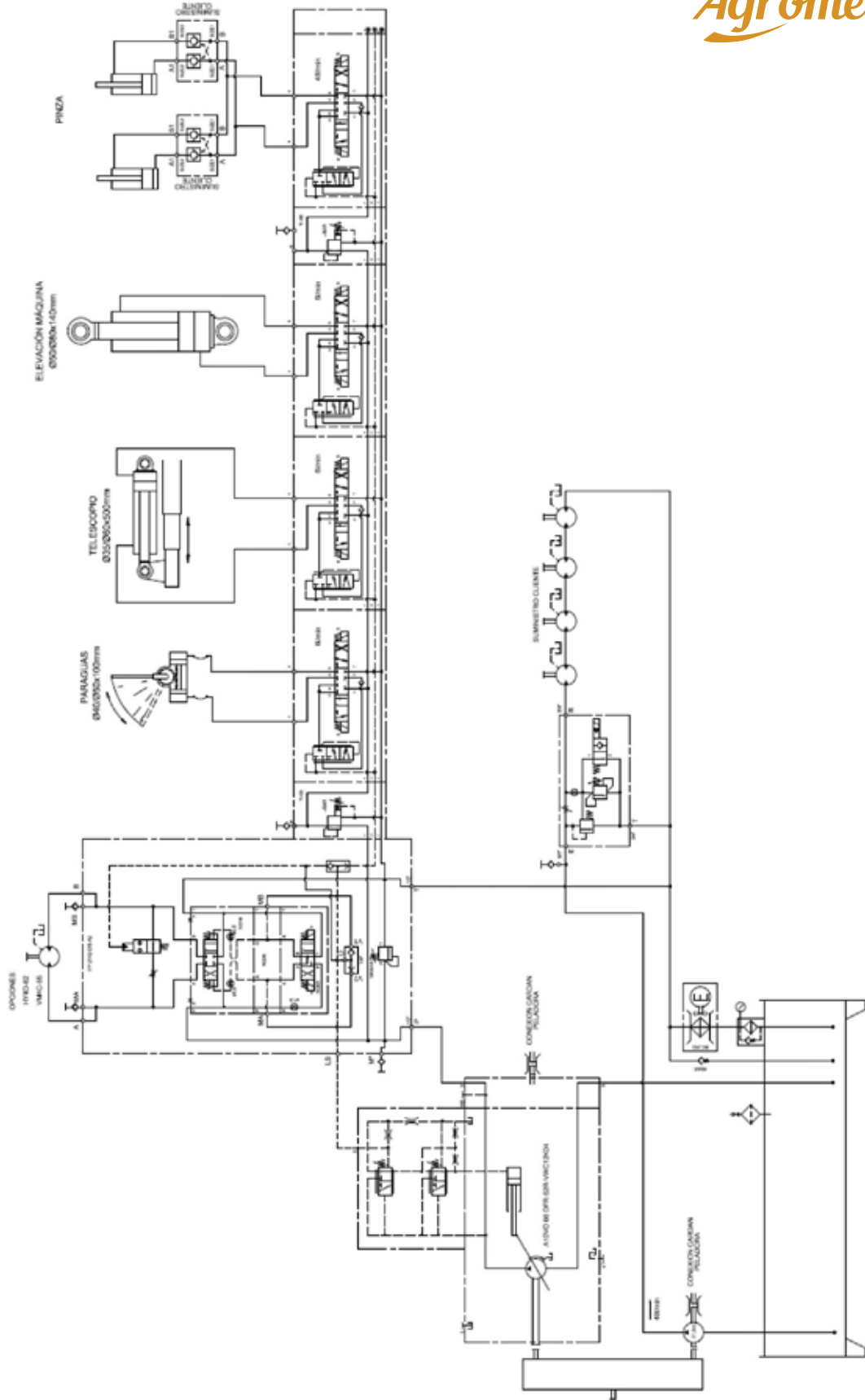
- 1 E.V. UMBRELLA OPEN/CLOSE Ref. V124110
- 2 E.V. THIRD HYDRAULIC POINT Ref. V124111
- 3 E.V. FRONT RAISE/LOWER Ref. V124112
- 4 E.V. PINCER OPEN/CLOSE Ref. V124213
- 5 E.V. PRESSURE LIMITERS Ref. V124114
- 6 E.V. BRAKE REGULATOR Ref. V124115
- 7 E.V. GENERAL PRESSURE REGULATOR Ref. V124116
- 8 PUMP PILOT VALVE Part No. V124117
- 9 VIBRATION SOLENOID VALVE Ref. V124118
- 10 INTERMEDIATE DISPENSING PLATE Ref. V124119
- 11 VIBRATION DISTRIBUTOR Part No. V121120

HYDRAULIC DIAGRAM



NOTE: for SOLENOID VALVE BLOCK spare parts, it is necessary to specify VERSION, MODEL or MACHINE FRAME no.

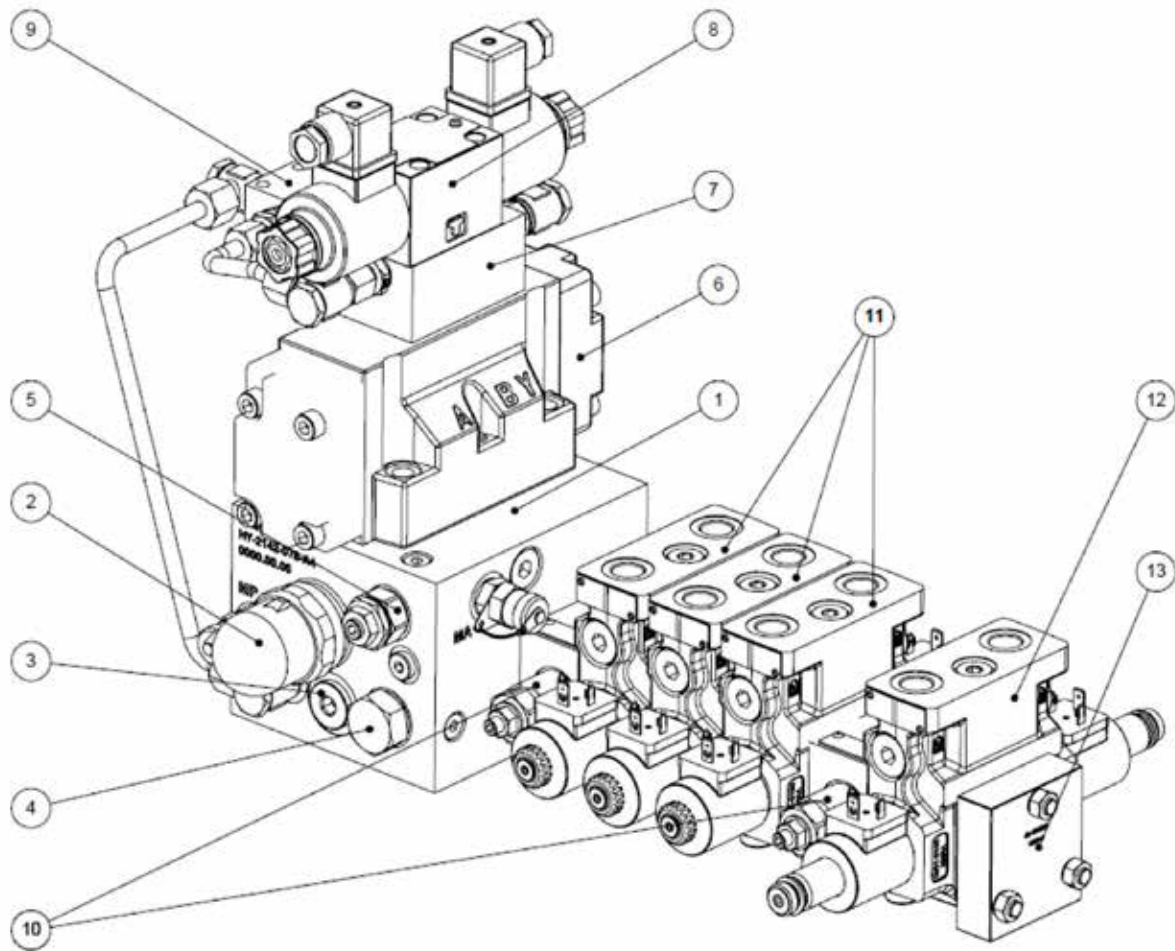
IDENTIFICATION



DAY BY DAY WE IMPROVE THE WORLD OF COLLECTING



HYDRAULIC SYSTEM COMPONENTS



No.	Qty.	Reference	Description
1	1	HY-2142-078-A4	Manoeuvring block
2	1	R900424271	PRESS. REGUL. VALVE DBDS 20 K1X/315
3	1	R901161981	SELECTOR VALVE SELB-08A
4	1	R901095969	VLDT-10A
5	1	OWVBF6V	REG. VALVE "Q" VBF6V 30L/M 350b 3/4-16UNF
6	1	E0014C2X56B	DISTRIBUTOR NG16 SW-G04-C2-E-56B WITHOUT PILOTING
7	1	EUREB30314	INTERMEDIATE PLATE NG6 OUTPUT A and B 1/4"
8	1	R933004416	SOLENOID VALVE.NG00 LC1-DZ-E201-12DC-SC-N
9	1	R930002701	SELECTOR VALVE 1/4" VFC-NC-14
10	2	R933007467	INTERM. PLATE REDUCT. PRES. EN P TI-03-00-V2-AL
11	3	R933008784	ELEMENT L8510B2S100000000-KE.EDC-Z-3/8G
12	1	R930039870	ELEMENT K8511B2S900002000-KE.EDC-DZ-1/2G
13	1	R933002803	OUTLET COVER TC-00-00-00-CI

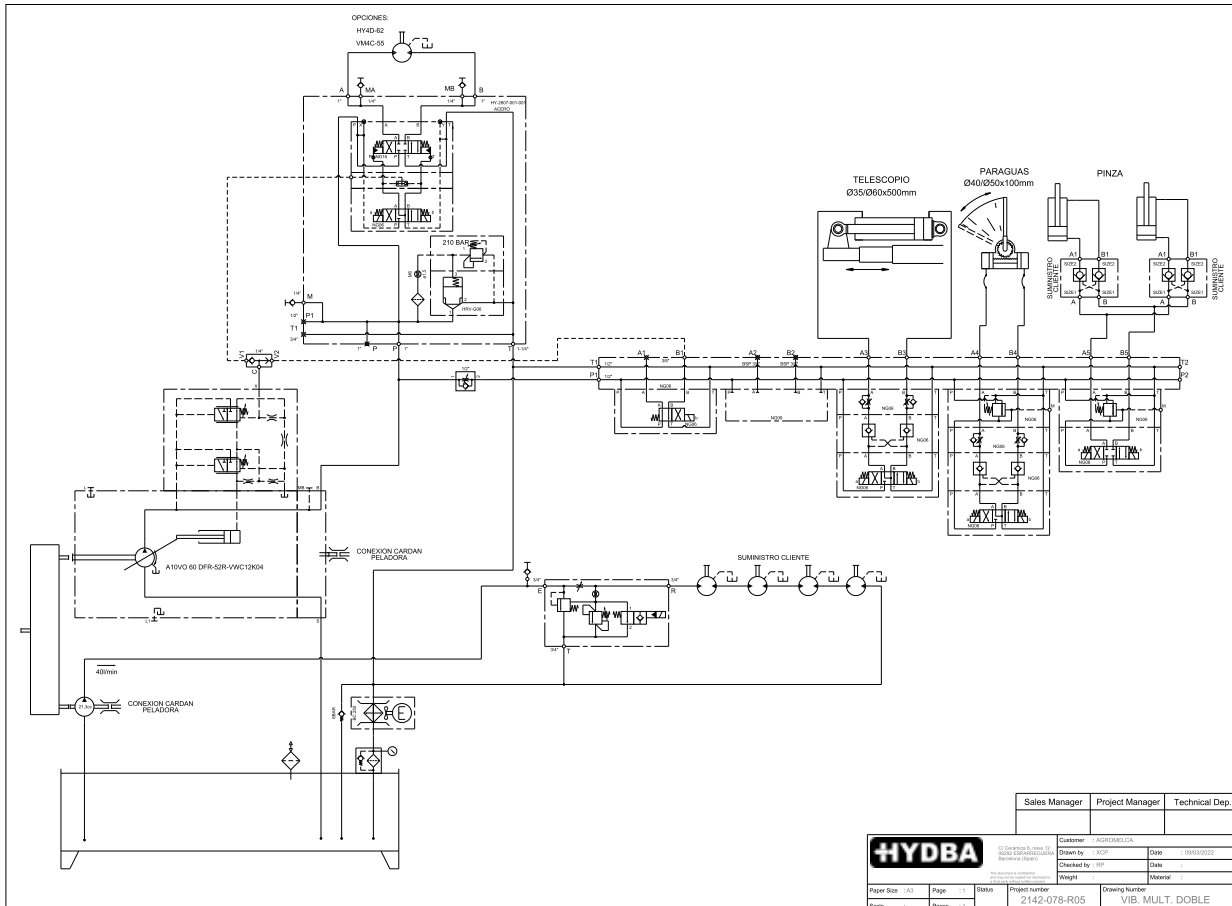
1.4.2. HYDRAULIC BLOCK CHASSIS 2021



- 1 E.V. BY PASS Ref. V124209
- 2 E.V. FRONT RAISE/LOWER Ref. V124212
- 3 E.V. UMBRELLA OPEN/CLOSE Ref. V124216
- 4 E.V. PINCER OPEN/CLOSE Ref. V124213



HYDRAULIC DIAGRAM



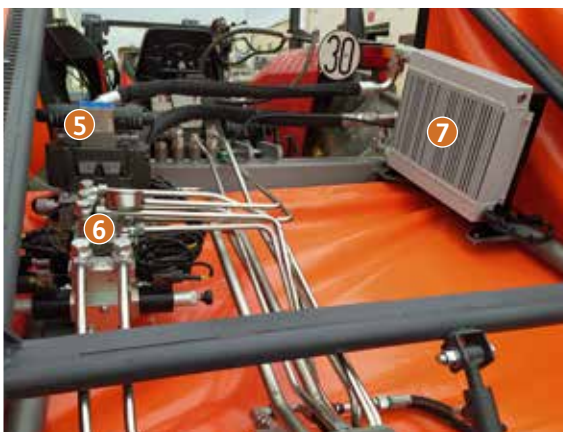
1.5. Hydraulic power pack - Tank



- 1 RESPIRATOR Ref. V130503
- 2 LEVEL Ref. V132010



- 3 RETURN FILTER Ref. V140014
- 4 RETURN FILTER CARTRIDGE Ref. V140009



- 5 PEELER BLOCK Ref. V130520
- 6 VIBRATION BLOCK Ref. V130521
- 7 COMPLETE HEAT EXCHANGER GROUP
Ref. V131030
Heat exchanger panel Ref. V131031
Fan Ref. V131032
THERMOSTAT Ref. V131033



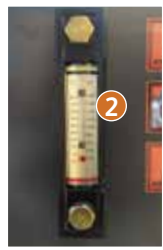
- 8 PEELER PUMP Ref. V130520
- 9 VARIABLE FLOW PISTON PUMP
(MACHINE MOV.) Ref. V130540

NOTE: for PUMP spare parts, it is necessary to indicate MAKE, MODEL or MACHINE FRAME no.

1.6. Hydraulic power pack - Tank 2022



- 1 RESPIRATOR Ref. V130503
- 2 LEVEL Ref. V132010



- 3 RETURN FILTER Ref. V140014
- 4 RETURN FILTER CARTRIDGE Ref. V140009



- 5 PEELER BLOCK Ref. V130520
- 6 VIBRATION BLOCK Ref. V130521
- 7 COMPLETE HEAT EXCHANGER GROUP
Ref. V131030
Heat exchanger panel Ref. V131031
Fan Ref. V131032
THERMOSTAT Ref. V131033



- 8 PEELER PUMP Ref. V130520
- 9 VARIABLE FLOW PISTON PUMP
(MACHINE MOV.) Ref. V130540

NOTE:: for PUMP spare parts, it is necessary to indicate MAKE, MODEL or MACHINE FRAME no.

1.7. Electronics, control, power box, wiring

1.7.1. COBRA CONTROL



VTS JOYSTICK CONTROL 2020

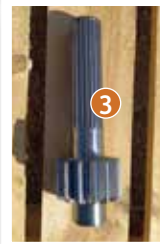
- ① COMPLETE BOX Ref. V147200
- ② JOYSTICK Ref. V17100
- ③ PUSH BUTTONS Ref. V147101
- ④ WIRING 1 Ref. V147203
- ⑤ WIRING 2 Ref. V147204
- ⑥ SOLENOID VALVE CONNECTORS Ref. V147105



2. Harvester Platform



- 1 BOX Ref. V20000
- 2 ROTARY CYLINDER UMBRELLA OPENINGS (splined shaft) (X2) Ref. V200201
- 3 SPLINED SHAFT (X2) Ref. V200231



- 4 CHECK VALVE Ref. V200104
- 5 HARVESTER PLATFORM FIXING SUPPORTS (X3) Ref. V200105



- 6 LIFTING CYLINDER Ref. V121900

NOTE: for PLATFORM spare parts, it is necessary to indicate MODEL or MACHINE FRAME no.



- 1 UNLOADING TUBE Ref. V200900
- 2 UNLOADING AUGER REF.V200901
- 3 UNLOADING AUGER MOTOR Ref. V300303



- 1 TOP BAR Ref. V200801
- 2 FRONT FRAME REF.V200800
- 3 TOP RACK (X2) Ref. V200802
- 4 CANVAS FIXING BLADES (X10) Ref. V200405
- 5 BAR SAFETY STOP (X2) Ref. V200406
- 6 SIDE RACK (X2) Ref. V200803



- 7 NET Ref. V200804



- 1 TRUNK COVER GUARD (X2) Ref. V200409.2020
TRUNK COVER GUARD (X2) Ref. V200409.2021
- 2 SUPPORT RUBBER SEAL TYPE 1 (X2) Ref. V200421 (17.5 cm)
- 3 SUPPORT RUBBER SEAL TYPE 2 (X2) Ref. V200422 (25 cm)
- 4 PLATES TYPE 1 (X2) Ref. V200411

NOTE: for PLATFORM spare parts, it is necessary to indicate MODEL or MACHINE FRAME no.



- 1 UNLOADING TUBE Ref. V200900
- 2 UNLOADING AUGER REF.V200901
- 3 UNLOADING AUGER MOTOR Ref. V300303



- 1 TOP BAR Ref. V200801
- 2 FRONT FRAME Ref. V200800
- 3 BOTTOM RACK (X2) Ref. V200802
- 4 CANVAS FIXING PLATES (X10) Ref. V200405
- 5 BAR SAFETY STOP (X2) Ref. V200406
- 6 SIDE RACK (X2) Ref. V200803

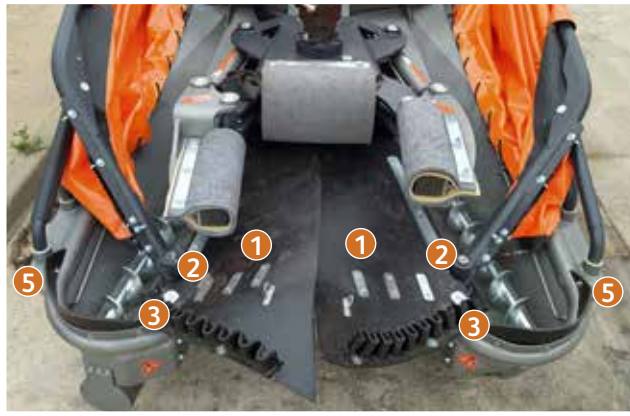


- 7 NET Ref. V200804



- 1 TRUNK COVER GUARD (X2) Ref. V200409.2022
- 2 CANVAS SUPPORT GUARD (X2) Ref. V200425

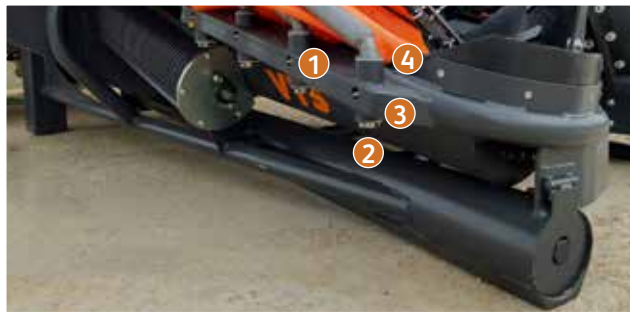
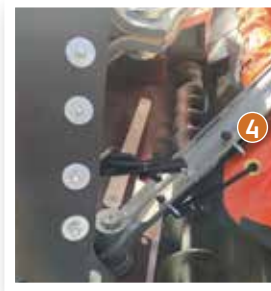
NOTE: for PLATFORM spare parts, it is necessary to indicate MODEL or MACHINE FRAME no.



- 1 PLATES TYPE 2 (X8) REF.V200412
- 2 PLATES TYPE 2 (X8) REF.V200412
- 3 PLATES TYPE 2 (X8) REF.V200412
- 4 CANVAS FIXING RINGS (X10) REF. V200503
- 5 BAR BOLTS (X8 OR X6) REF.V200510



- 6 BRIDGE PLATE (X2) Ref. V200417
- 7 CORRUGATED BAND (X2) Ref. V200416



- 1 BAR GREASERS (X6) Ref. V200516
- 2 PIN (X16) Ref. V200513
- 3 WASHER (X16) Ref. V200514
- 4 NYLON BUSHING (X16) Ref. V200515



- 1 COMPLETE RIGHT OPENING BAR WITH BOLT (SPLINED SHAFT)
Minimum angle Ref. V200582
Normal angle Ref. V200583
- 2 COMPLETE LEFT OPENING BAR WITH BOLT (SPLINED SHAFT)
Minimum angle Ref. V200580
Normal angle Ref. V200581
- 3 COMPLETE BAR 2 (X2) WITH BOLT
Minimum angle Ref. V200524
Normal angle Ref. V200525
- 4 COMPLETE BAR 3 (X2) WITH BOLT
Minimum angle Ref. V200526
Normal angle Ref. V200527
- 5 COMPLETE BAR 4 (X2) WITH BOLT
Minimum angle Ref. V200528
Normal angle Ref. V200529



- 6 BAR SAFETY GUARD (X8) REF.V200511
- 7 BAR PLUG (X8) REF.V200512



- 8 CANVAS RIGHT REF.V200602
- 9 CANVAS LEFT REF.V200601



- 10 BOX COVER CANVAS 2020 REF.V200582
- 11 BOX COVER CANVAS 2021 REF.V200582



COMPLETE CANVAS SUPPLEMENT (Bars+Canvases) 0.5 m
Ref. V200562

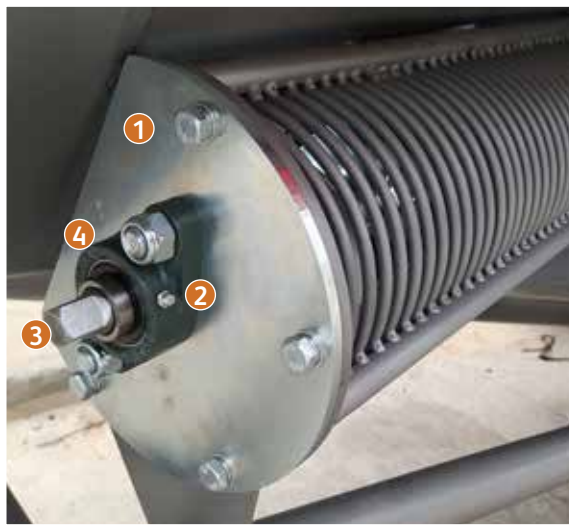
- 12 BAR SUPPLEMENT 0.5m Ref. V200561
- LEFT CANVAS SUPPLEMENT 0.5 m Ref. V200562
- RIGHT CANVAS SUPPLEMENT 0.5 m Ref. V200563

COMPLETE CANVAS SUPPLEMENT (Bars+Canvases) 1 m
Ref. V200570

- 13 BAR SUPPLEMENT 1m Ref. V200571
- LEFT CANVAS SUPPLEMENT 1 m Ref. V200572
- RIGHT CANVAS SUPPLEMENT 1 m Ref. V200573

NOTE: for CANVAS, DRAWING BAR or BAR BOLT spare parts, it is necessary to indicate PLATFORM MODEL or CANVAS DIMENSIONS or MACHINE FRAME no.

2.1. Peelers and augers



- ❶ PEELER CLOSING COVER (X2) Ref. V300424
- ❷ SUPPORT AND BEARING (X2) Ref. V300425
- ❸ SHAFT (X2) Ref. V300526
- ❹ SUPPORT PLATE (X2) V300427



- ❺ COMPLETE LEFT PEELER ASSEMBLY
(Motor not included) Ref. V300401
- ❻ COMPLETE RIGHT PEELER ASSEMBLY
(Motor not included) Ref. V300402
- ❼ LEFT PEELER FEEDER AUGER
Ref. V300431
- ❽ RIGHT PEELER FEEDER AUGER
Ref. V300432

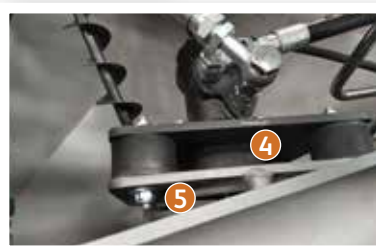
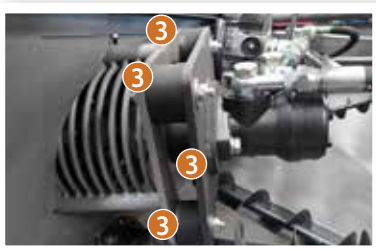


- ❾ 8 POINT SEPARATOR Ref. V300443
- ❿ SINGLE PEELER RUBBER SEAL
Hard Material Ref. V300454
Soft Material Ref. V300455
- ⓫ DOUBLE PEELER RUBBER SEAL Ref. V300453
- ⓬ IRON BLADE Ref. V300456





- 1 PEELER MOTOR (X2) Ref. V300420
- 2 PEELER MOTOR SUPPORT (X2) Ref. V310421
- 3 SILENTBLOCKS (X8) Ref. V300422
- 4 MOTOR-PEELER CONNECTING SHAFT (X2) Ref. V300423
- 5 SHAFT BEARINGS (X4) Ref. V300428
- 6 RETENTION RING (X2) Ref. V300429



2.1.1. AUGERS



- 1 LEFT FEEDER AUGER Ref. V300301
- 2 RIGHT FEEDER AUGER Ref. V300302



- 3 AUGER MOTOR (X2) Ref. V300303
Enquire about individual components





1 AUGER FLOW REGULATOR Ref. V300601



2 FEEDER AUGER (X2) Ref. V310301

3 AUGER MOTOR (X2) Ref. V300303



4 FEEDER AUGER (X2) Ref. V310301

5 AUGER MOTOR (X2) Ref. V300303



AGROMELCA RECOMMENDS USING:**FOR GREASING OF HEAD COVERS: SKF LGHB 2**

Available sizes:

400 g	Ref. LGHB 2/0.4
5 kg	Ref. LGHB 2/5
18 kg	Ref. LGHB 2/18
50 kg	Ref. LGHB 2/50
180 kg	Ref. LGHB 2/180



Agromelca Hydraulic Oil, Ref. 51524 - 3HVLP



Agromelca

DAY BY DAY
WE IMPROVE
THE WORLD OF
COLLECTING

PLATFORM
MADE OF
ALUMINIUM

www.agromelca.com

Pol. Industrial "Las Lagunas", P-A 2
44610 Calaceite - Teruel (Spain)
Tel. 978 851 283 - Fax 978 851 243

info@agromelca.com